

-- Investment Grade USD --

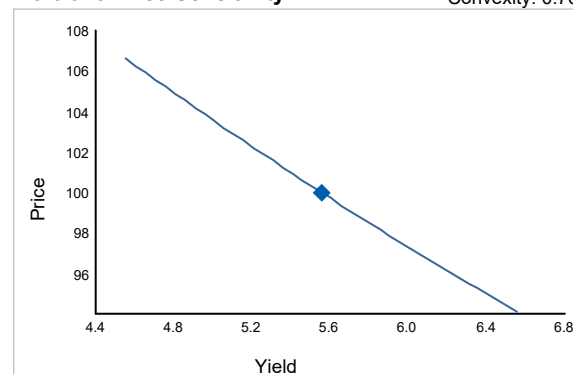
Portfolio Summary (Ask)

Net Asset Value	Currency	Yield	Mod. Duration	D/Swap	Rating
69'042 k	USD	5.56 %	6.22 %	113 bp	A-

Price: 100.00 %	Coupon: 4.23 %
Macaulay Duration: 6.40 yr	Price Value: 0.57 %
Life to Workout: 9.16 yr	Life to Maturity: 9.17 yr
Bid/Ask Spread: 54 bp	Number of issues: 736

Portfolio Price Sensitivity

Convexity: 0.76%



	<u>Yield</u>	<u>Price</u>	<u>Perf</u>
-100 bp	4.56	106.60	6.60
-50 bp	5.06	103.21	3.21
-25 bp	5.31	101.58	1.58
+25 bp	5.81	98.47	-1.53
+50 bp	6.06	96.98	-3.02
+100 bp	6.56	94.16	-5.84

The NAV is calculated using for each bond a nominal of USD 100k equivalent

Ccy	Forex Rate	NAV (Ref ccy)	NAV (%)	Mod. Duration (%)	Exposure (%)	Price (%)	Yield (%)	D/Swap (%)	Rating	Coupon (%)	Bid/Ask Spread
USD	1.0000	69'042 k	100.00	6.22	100.00	100.00	5.56	113	A-	4.23	54

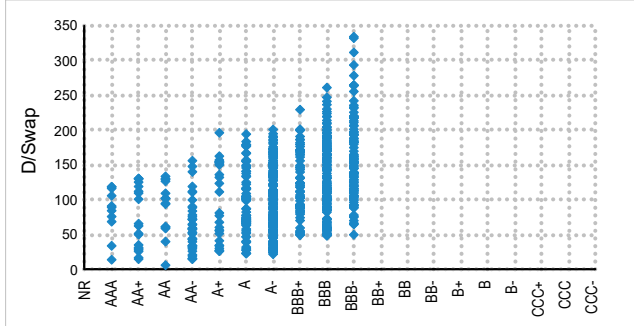
Yields are annualized.

See last page for abbreviations, explanations and disclaimer.

-- Investment Grade USD --

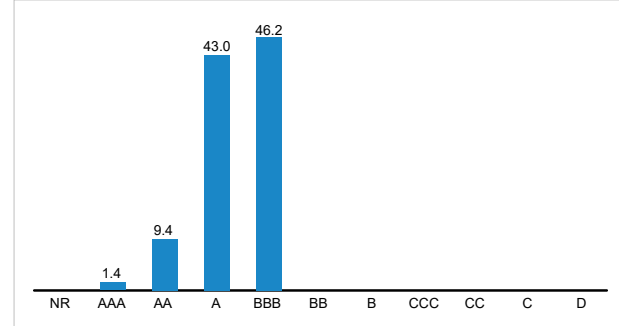
Portfolio Summary (Ask) - Standard Charts

Min Rating vs. D/Swap



Breakdown by Min Rating (%)

IG: 100% / HY: 0%

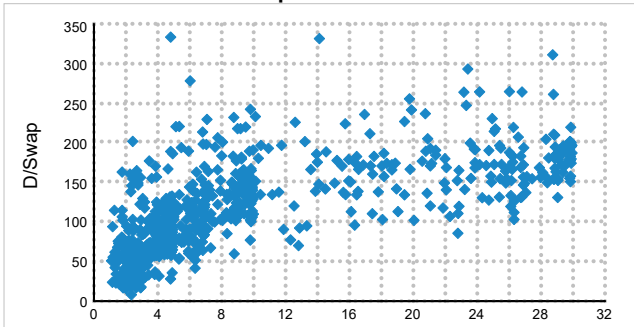


Breakdown by Ctry of Risk (%) - Top 10

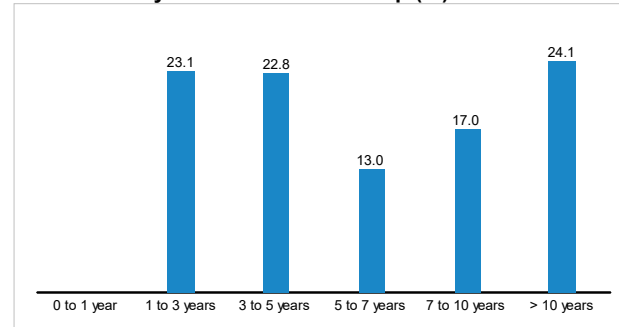
Dev: 95% / EM: 5%

UNITED STATES	81.60
AUSTRALIA	7.20
CANADA	3.28
JAPAN	2.10
ROMANIA	1.66
POLAND	0.70
MEXICO	0.55
PERU	0.37
QATAR	0.35
UNITED ARAB EMIRATES	0.32

Life to Workout vs. D/Swap



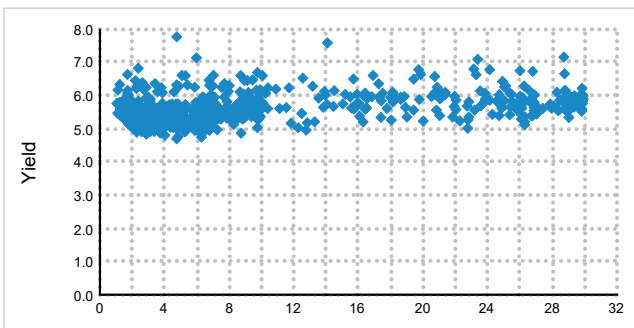
Breakdown by Life to Workout Group (%)



Breakdown by Issuer (%) - Top 10

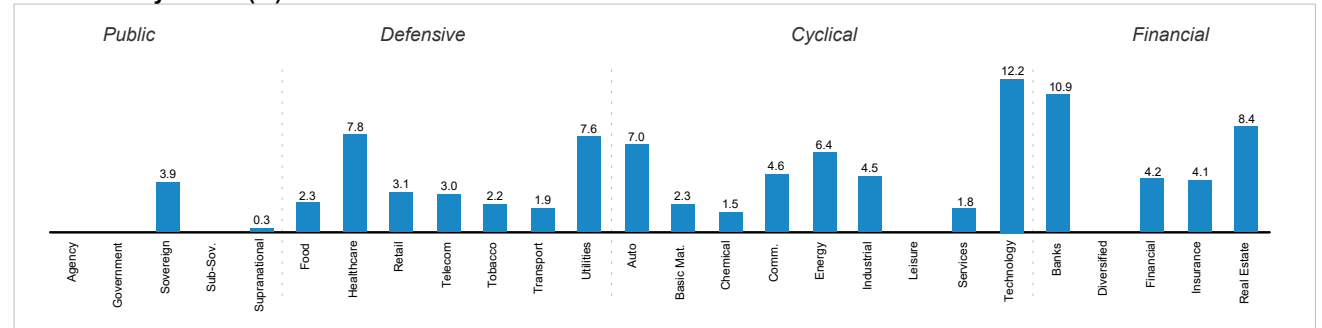
GENERAL MOTORS CORP	2.88
COMCAST CORP	2.61
INTERNATIONAL BUSINESS MACHINES I	2.56
APPLE INC	2.38
PHILIP MORRIS INTERNATIONAL INC	1.96
WESTPAC BANKING CORP	1.80
HYUNDAI MOTOR CO	1.68
ROMANIA GOVERNMENT	1.66
INTEL CORP	1.58
ORACLE CORPORATION	1.44

Life to Workout vs. Yield



Breakdown by Sector (%)

Defensive: 32% / Cyclical: 68%



Yields are annualized.

See last page for abbreviations, explanations and disclaimer.

-- Investment Grade USD --

Bond list (Sorted by Workout Date)

USD

Isin	Ccy	Cpn	Issuer	Maturity	Amnt Out.	Ask	Yield	D/Swap	Durat.	Pieces	ESG	Rating	City / Sector	Miscellaneous
1 to 3 years														
US7591EPAQ39	USD	2.250	REGIONS FINANCIAL CORP	18.05.2025	750 MM	96.63	5.75	50	0.98	2k+1k	●	BBB+	US / Banks	W/Tax, C 2025@100, MWC (30bp), Glob
US06368D3S13	USD	3.700	BANK OF MONTREAL	07.06.2025	1.3 B	98.25	5.45	23	1.03	2k+1k	●	A-	CA / Banks	Dom., MWC (15bp)
US87165BAS25	USD	4.875	SYNCHRONY FINANCIAL	13.06.2025	750 MM	98.75	6.15	93	1.03	2k+1k	●	BBB-	US / Services	W/Tax, Dom., C 2025@100, MWC (30bp)
US37045XCX21	USD	2.750	GENERAL MOTORS FINL CO *	20.06.2025	1.25 B	96.86	5.76	55	1.07	2k+1k		BBB	US / Auto	W/Tax, C 2025@100, MWC (40bp), Glob
US00914AAH59	USD	3.375	AIR LEASE CORP	01.07.2025	850 MM	97.50	5.72	52	1.09	2k+1k	●	BBB	US / Services	W/Tax, Dom., C 2025@100, MWC (50bp)
US37045XAZ96	USD	4.300	GENERAL MOTORS FINL CO *	13.07.2025	800 MM	98.49	5.71	52	1.12	2k+1k		BBB	US / Auto	W/Tax, C 2025@100, MWC (35bp), Glob
US87165BAG86	USD	4.500	SYNCHRONY FINANCIAL	23.07.2025	1 B	98.01	6.32	114	1.14	2k+1k	●	BBB-	US / Services	W/Tax, C 2025@100, MWC (35bp), Glob
US55608RAQ39	USD	4.000	MACQUARIE BANK LTD *	29.07.2025	500 MM	98.10	5.70	52	1.16	2k+1k	●	A+	AU / Banks	
US47102XAJ46	USD	4.875	JANUS HEND US HLDGS INC	01.08.2025	300 MM	99.03	5.78	61	1.16	2k+1k	●	BBB	US / Financial	W/Tax, C 2025@100, MWC (45bp), Glob
US89788MAA09	USD	1.200	TRUIST FINANCIAL CORP	05.08.2025	750 MM	94.89	5.58	41	1.20	2k+1k		A- (w/-)	US / Banks	W/Tax, Dom., C 2025@100
US961214FA65	USD	3.735	WESTPAC BANKING CORP	26.08.2025	700 MM	98.06	5.36	22	1.24	2k+1k		AA-	AU / Banks	Global
US828807CV75	USD	3.500	SIMON PROPERTY GROUP LP *	01.09.2025	1.1 B	97.62	5.47	33	1.26	2k+1k		A-	US / Real Estate	W/Tax, C 2025@100, MWC (20bp), Glob
US94974BGP94	USD	3.550	WELLS FARGO & COMPANY	29.09.2025	2.5 B	97.36	5.61	51	1.33	1k+1k		BBB+	US / Banks	W/Tax, Dom.
US093662AG97	USD	5.250	BLOCK FINANCIAL LLC	01.10.2025	350 MM	99.41	5.77	67	1.32	2k+1k	●	BBB-	US / Services	W/Tax, Step Rtg, C 2025@100, MWC (50bp)
US02665WEQ06	USD	5.800	AMERICAN HONDA FINANCE	03.10.2025	950 MM	100.65	5.38	28	1.33	2k+1k	●	A-	US / Auto	W/Tax, MWC (15bp), Global
XS0546241075	USD	4.500	HONGKONG LAND FINANCE	07.10.2025	600 MM	98.40	5.77	67	1.34	100k+1k		A	HK / Real Estate	
US42824CAW91	USD	4.900	HP ENTERPRISE CO *	15.10.2025	2.5 B	99.15	5.60	51	1.36	2k+1k	●	BBB	US / Technology	W/Tax, C 2025@100, MWC (45bp), Glob
US20030NCS80	USD	3.950	COMCAST CORP	15.10.2025	2.9 B	98.20	5.34	25	1.37	2k+1k	●	A-	US / Comm.	W/Tax, C 2025@100, MWC (15bp), Glob
US44891CBN20	USD	1.800	HYUNDAI CAPITAL AMERICA *	15.10.2025	750 MM	94.61	5.84	75	1.38	2k+1k	●	BBB+	US / Auto	W/Tax, C 2025@100, MWC (25bp)

Yields are annualized.

See last page for abbreviations, explanations and disclaimer.

Isin	Ccy	Cpn	Issuer	Maturity	Amnt Out.	Ask	Yield	D/Swap	Durat.	Pieces ESG	Rating	Cty / Sector	Miscellaneous
USQ8351LAD57	USD	3.250	SCENTRE GROUP TRUST 1/2	28.10.2025	500 MM	96.56	5.80	72	1.41	2k+1k	● A	AU / Real Estate	C 2025@100, MWC (25bp)
US85207UAK16	USD	7.625	SPRINT LLC	01.03.2026	1.5 B	102.99	5.58 c	50	1.37	2k+1k	BBB-	US / Telecom	W/Tax, C 2025@100, MWC (50bp), Glob
US961214FL21	USD	5.512	WESTPAC BANKING CORP	17.11.2025	1 B	100.47	5.26	20	1.41	2k+1k	AA-	AU / Banks	Global
US45866FAD69	USD	3.750	INTERCONTINENTALEXCHANGE	01.12.2025	1.25 B	97.75	5.33	29	1.47	2k+1k	● A-	US / Financial	W/Tax, C 2025@100, MWC (25bp), Glob
US44891CBS17	USD	1.300	HYUNDAI CAPITAL AMERICA *	08.01.2026	850 MM	93.06	5.80	80	1.60	2k+1k	● BBB+	US / Auto	W/Tax, C 2025@100, MWC (15bp)
US37045XDD57	USD	1.250	GENERAL MOTORS FINL CO *	08.01.2026	1.5 B	93.31	5.57	57	1.60	2k+1k	BBB	US / Auto	W/Tax, C 2025@100, MWC (15bp), Glob
US02665WEY30	USD	4.950	AMERICAN HONDA FINANCE	09.01.2026	850 MM	99.57	5.28	29	1.56	2k+1k	● A-	US / Auto	W/Tax, MWC (10bp), Global
US756109BQ63	USD	5.050	REALTY INCOME CORP	13.01.2026	500 MM	99.73	5.28	29	1.57	2k+1k	A-	US / Real Estate	W/Tax, C 2024@100, MWC (20bp), Glob
US04010LAZ67	USD	3.875	ARES CAPITAL CORP	15.01.2026	1.15 B	96.69	6.05	106	1.58	2k+1k	BBB-	US / Financial	W/Tax, Dom., C 2025@100, MWC (50bp)
US69121KAD63	USD	4.250	BLUE OWL CAPITAL CORP	15.01.2026	500 MM	97.16	6.13	114	1.58	2k+1k	● BBB-	US / Financial	W/Tax, Dom., C 2025@100, MWC (50bp)
US302635AG21	USD	3.400	FS KKR CAPITAL CORP	15.01.2026	1 B	95.09	6.62	163	1.58	2k+1k	● BBB-	US / Financial	W/Tax, C 2025@100, MWC (50bp), Glob
US00914AAJ16	USD	2.875	AIR LEASE CORP	15.01.2026	1.45 B	95.64	5.69	70	1.60	2k+1k	● BBB	US / Services	W/Tax, Dom., C 2025@100, MWC (45bp)
USQ8352BAD66	USD	3.625	SCENTRE GROUP TRUST 1/2	28.01.2026	750 MM	96.66	5.76	78	1.62	2k+1k	● A	AU / Real Estate	C 2025@100, MWC (50bp)
US254709AP32	USD	4.500	DISCOVER FINANCIAL SVS	30.01.2026	600 MM	98.07	5.76	79	1.62	2k+1k	● BBB- (wl+)	US / Financial	W/Tax, C 2025@100, Global
US10112RAX26	USD	3.650	BOSTON PROPERTIES LP	01.02.2026	1 B	96.33	5.99	101	1.63	1k+1k	● BBB	US / Real Estate	W/Tax, Dom., C 2025@100, MWC (25bp)
US449276AA20	USD	4.700	IBM INTERNAT CAPITAL *	05.02.2026	600 MM	99.15	5.28	31	1.63	100k+1k	A-	US / Technology	W/Tax, MWC (10bp), Global
US037833EB24	USD	0.700	APPLE INC *	08.02.2026	2.5 B	92.77	5.12	16	1.70	2k+1k	● AA+	US / Technology	W/Tax, C 2026@100, MWC (5bp), Globa
US718172CY31	USD	4.875	PHILIP MORRIS INTL INC	13.02.2026	1.7 B	99.53	5.22	25	1.65	2k+1k	A-	US / Tobacco	W/Tax, MWC (15bp), Global
US718172BT54	USD	2.750	PHILIP MORRIS INTL INC	25.02.2026	750 MM	95.94	5.21	26	1.71	2k+1k	A-	US / Tobacco	W/Tax, C 2025@100, MWC (20bp), Glob
US055451AY40	USD	4.875	BHP BILLITON FIN USA LTD *	27.02.2026	1 B	99.46	5.26	31	1.69	2k+1k	A-	AU / Basic Mat.	MWC (10bp), Global
US745867AW12	USD	5.500	PULTEGROUP INC	01.03.2026	455.4 MM	100.17	5.46	51	1.69	2k+1k	● BBB	US / Industrial	W/Tax, C 2025@100, MWC (50bp), Glob
US902494BJ16	USD	4.000	TYSON FOODS INC *	01.03.2026	800 MM	97.49	5.54	59	1.71	2k+1k	BBB	US / Food	W/Tax, C 2026@100, MWC (25bp), Glob
US55336VBR06	USD	1.750	MPLX LP	01.03.2026	1.5 B	93.64	5.55	60	1.74	2k+1k	BBB	US / Energy	W/Tax, C 2026@100, MWC (25bp), Glob
US842400JB09	USD	5.350	SOUTHERN CAL EDISON *	01.03.2026	600 MM	100.14	5.34	39	1.69	1k+1k	A-	US / Utilities	W/Tax, MBS, MWC (10bp), Global
US86562MAC47	USD	3.784	SUMITOMO MITSUI FINL GRP	09.03.2026	1.5 B	97.42	5.34	40	1.74	2k+1k	● A-	JP / Banks	W/Tax, Global

Yields are annualized.

See last page for abbreviations, explanations and disclaimer.

Isin	Ccy	Cpn	Issuer	Maturity	Amnt Out.	Ask	Yield	D/Swap	Durat.	Pieces ESG	Rating	Cty / Sector	Miscellaneous
US808513BF16	USD	0.900	CHARLES SCHWAB CORP	11.03.2026	1.25 B	92.47	5.31	37	1.78	2k+1k	● A-	US / Financial	W/Tax, C 2026@100, MWC (10bp), Glob
US540424AS76	USD	3.750	LOEWS CORP	01.04.2026	500 MM	97.41	5.26	35	1.80	2k+1k	● A-	US / Insurance	W/Tax, C 2026@100, MWC (30bp), Glob
US045167FC21	USD	1.000	ASIAN DEVELOPMENT BANK	14.04.2026	5 B	92.73	5.05	15	1.87	1k+1k	● AAA	Supranational	Global
US06051GFX25	USD	3.500	BANK OF AMERICA CORP *	19.04.2026	2.5 B	96.99	5.21	32	1.85	2k+1k	● A-	US / Banks	W/Tax, MWC (30bp), Global
US78016EZQ33	USD	1.200	ROYAL BANK OF CANADA *	27.04.2026	1.7 B	92.76	5.17	29	1.90	2k+1k	● A	CA / Banks	MWC (7bp), Global
USQ8809VAH26	USD	3.625	SYDNEY AIRPORT FINANCE	28.04.2026	900 MM	96.10	5.83	94	1.87	2k+1k	● BBB+	AU / Services	Secured, C 2026@100, MWC (30bp)
US00440EAV92	USD	3.350	CHUBB INA HOLDINGS INC	03.05.2026	1.5 B	96.65	5.21	33	1.89	2k+1k	● A-	US / Insurance	W/Tax, C 2026@100, MWC (20bp), Glob
US06406FAC77	USD	2.800	BANK OF NY MELLON CORP	04.05.2026	750 MM	95.78	5.12	24	1.90	1k+1k	● A	US / Banks	W/Tax, Dom., C 2026@100
US961214CX95	USD	2.850	WESTPAC BANKING CORP	13.05.2026	1.5 B	95.64	5.22	35	1.90	2k+1k	● AA-	AU / Banks	Global
US459200JZ55	USD	3.300	IBM CORP *	15.05.2026	3 B	96.27	5.34	47	1.89	100k+1k	● A-	US / Technology	W/Tax, MWC (15bp), Global
US29444UBQ85	USD	1.450	EQUINIX INC	15.05.2026	700 MM	92.29	5.61	74	1.93	2k+1k	● BBB	US / Real Estate	W/Tax, Dom., C 2026@100, MWC (10bp)
US2027A1HT70	USD	2.850	COMMONWEALTH BANK AUST *	18.05.2026	857.0 MM	95.69	5.18	31	1.91	2k+1k	● AA-	AU / Banks	
US025816CF44	USD	3.125	AMERICAN EXPRESS CO	20.05.2026	850 MM	95.77	5.42	55	1.91	2k+1k	● BBB+	US / Financial	W/Tax, C 2026@100, Global
US369550BN70	USD	1.150	GENERAL DYNAMICS CORP	01.06.2026	500 MM	92.23	5.23	37	1.98	2k+1k	● A-	US / Industrial	W/Tax, C 2026@100, MWC (7bp), Globa
US50540RAX08	USD	1.550	LABORATORY CORP OF AMER	01.06.2026	500 MM	92.64	5.43	57	1.97	1k+1k	● BBB	US / Healthcare	W/Tax, Dom., C 2026@100, MWC (12bp)
US961214ER00	USD	1.150	WESTPAC BANKING CORP	03.06.2026	1.45 B	92.27	5.19	33	1.99	2k+1k	● AA-	AU / Banks	Global
US06368LNT97	USD	5.300	BANK OF MONTREAL	05.06.2026	1.35 B	100.41	5.15	29	1.90	2k+1k	● A-	CA / Banks	MWC (20bp), Global
US24422EWX39	USD	4.750	JOHN DEERE CAPITAL CORP	08.06.2026	600 MM	99.32	5.16	31	1.92	1k+1k	● A	US / Industrial	W/Tax, Dom.
US37045XDK90	USD	1.500	GENERAL MOTORS FINL CO *	10.06.2026	1.25 B	92.20	5.58	72	2.00	2k+1k	● BBB	US / Auto	W/Tax, C 2026@100, MWC (15bp), Glob
US8923231AP43	USD	5.275	TOYOTA MOTOR CORP *	13.07.2026	500 MM	100.26	5.21 c	35	1.93	2k+1k	● A+	JP / Auto	W/Tax, C 2026@100, MWC (10bp), Glob
US404119BT57	USD	5.250	HCA INC	15.06.2026	1.5 B	99.44	5.61	76	1.93	2k+1k	● BBB-	US / Healthcare	W/Tax, C 2025@100, MWC (50bp), Glob
US22822VAC54	USD	3.700	CROWN CASTLE INC	15.06.2026	750 MM	96.58	5.51	66	1.96	2k+1k	● BBB-	US / Real Estate	W/Tax, C 2026@100, MWC (30bp), Glob
US46625HRS12	USD	3.200	JPMORGAN CHASE & CO *	15.06.2026	1.75 B	95.93	5.33	48	1.97	2k+1k	● A-	US / Banks	W/Tax, C 2026@100, MWC (20bp), Glob
US44891CBW29	USD	1.500	HYUNDAI CAPITAL AMERICA *	15.06.2026	850 MM	91.86	5.74	88	2.01	2k+1k	● BBB+	US / Auto	W/Tax, C 2026@100, MWC (15bp)
US2027A1KD81	USD	1.125	COMMONWEALTH BANK AUST *	15.06.2026	1.2 B	91.99	5.26	40	2.02	2k+1k	● AA-	AU / Banks	

Yields are annualized.

See last page for abbreviations, explanations and disclaimer.

Isin	Ccy	Cpn	Issuer	Maturity	Amnt Out.	Ask	Yield	D/Swap	Durat.	Pieces ESG	Rating	Cty / Sector	Miscellaneous
US40434LAF22	USD	1.450	HP INC *	17.06.2026	517.5 MM	92.16	5.50	65	2.02	2k+1k	● BBB	US / Technology	W/Tax, C 2026@100, MWC (12bp), Glob
US337738AT51	USD	3.200	FISERV INC	01.07.2026	2 B	95.84	5.34	50	2.01	2k+1k	● BBB	US / Technology	W/Tax, C 2026@100, MWC (20bp), Glob
US02665WEK36	USD	5.250	AMERICAN HONDA FINANCE	07.07.2026	950 MM	100.22	5.20	37	1.99	2k+1k	● A-	US / Auto	W/Tax, MWC (12bp), Global
US86562MAF77	USD	2.632	SUMITOMO MITSUI FINL GRP	14.07.2026	2.25 B	94.38	5.46	63	2.06	2k+1k	● A-	JP / Banks	W/Tax, Global
US68389XBM65	USD	2.650	ORACLE CORP	15.07.2026	3 B	94.53	5.40	57	2.06	2k+1k	● BBB	US / Technology	W/Tax, C 2026@100, MWC (20bp), Glob
US60871RAG56	USD	3.000	MOLSON COORS BEVERAGE	15.07.2026	2 B	95.39	5.32	49	2.06	2k+1k	● BBB	US / Food	W/Tax, C 2026@100, MWC (25bp), Glob
US69121KAE47	USD	3.400	BLUE OWL CAPITAL CORP	15.07.2026	1 B	94.09	6.43	160	2.03	2k+1k	● BBB-	US / Financial	W/Tax, C 2026@100, MWC (50bp), Glob
US89115A2S07	USD	5.532	TORONTO-DOMINION BANK	17.07.2026	1.8 B	100.49	5.36	53	2.01	2k+1k	● A	CA / Banks	MWC (15bp), Global
US91159HHN35	USD	2.375	US BANCORP	22.07.2026	1.35 B	94.43	5.14	31	2.09	1k+1k	● A-	US / Banks	W/Tax, Dom., C 2026@100
US693475AX33	USD	2.600	PNC FINANCIAL SERVICES	23.07.2026	1 B	94.57	5.30	47	2.09	2k+1k	● A-	US / Banks	W/Tax, C 2026@100, Global
US808513CG89	USD	5.875	CHARLES SCHWAB CORP	24.08.2026	1 B	101.45	5.24 c	41	2.03	2k+1k	● A-	US / Financial	W/Tax, C 2026@100, MWC (20bp), Glob
US61761J3R84	USD	3.125	MORGAN STANLEY *	27.07.2026	3 B	95.64	5.30	47	2.09	1k+1k	● A-	US / Banks	W/Tax, Dom., MWC (25bp)
US037833BZ29	USD	2.450	APPLE INC *	04.08.2026	2.25 B	94.79	5.00	18	2.13	2k+1k	● AA+	US / Technology	W/Tax, C 2026@100, MWC (15bp), Glob
US87165BAL71	USD	3.700	SYNCHRONY FINANCIAL	04.08.2026	500 MM	95.03	6.20	138	2.08	2k+1k	● BBB-	US / Services	W/Tax, C 2026@100, MWC (35bp), Glob
US61746BCY02	USD	6.250	MORGAN STANLEY *	09.08.2026	723.2 MM	102.09	5.32	50	2.05	100k+1k	● A-	US / Banks	W/Tax, Dom., MWC (20bp)
US89236TKX27	USD	5.000	TOYOTA MOTOR CREDIT CORP *	14.08.2026	650 MM	99.87	5.12	31	2.10	2k+1k	● A+	US / Auto	W/Tax, Global
US02079KAC18	USD	1.998	ALPHABET INC *	15.08.2026	2 B	93.99	4.88	7	2.17	2k+1k	● AA	US / Comm.	W/Tax, C 2026@100, MWC (12bp), Glob
US120568AX84	USD	3.250	BUNGE LTD FINANCE CORP	15.08.2026	700 MM	95.51	5.45	63	2.13	2k+1k	● BBB (w+)	US / Food	W/Tax, C 2026@100, MWC (30bp), Glob
US960413AT94	USD	3.600	WESTLAKE CORP	15.08.2026	749.8 MM	96.16	5.49	68	2.12	2k+1k	● BBB	US / Chemical	W/Tax, C 2026@100, MWC (35bp), Glob
US961214DC40	USD	2.700	WESTPAC BANKING CORP	19.08.2026	1 B	94.90	5.16	35	2.16	2k+1k	● AA-	AU / Banks	Global
US38173MAB81	USD	2.500	GOLUB CAPITAL BDC	24.08.2026	600 MM	92.26	6.26	145	2.16	2k+1k	● BBB-	US / Financial	W/Tax, C 2026@100, MWC (30bp), Glob
US680223AK06	USD	3.875	OLD REPUBLIC INTL CORP	26.08.2026	550 MM	96.62	5.53	73	2.15	2k+1k	● BBB	US / Insurance	W/Tax, C 2026@100, MWC (35bp), Glob
US404121AH82	USD	5.375	HCA INC	01.09.2026	1 B	99.74	5.57	77	2.13	2k+1k	● BBB-	US / Healthcare	W/Tax, Dom., C 2026@100, MWC (50bp), Glob
US2027A1HY65	USD	2.625	COMMONWEALTH BANK AUST *	06.09.2026	1 B	94.31	5.32	52	2.21	2k+1k	● AA-	AU / Banks	
US055451BB38	USD	5.250	BHP BILLITON FIN USA LTD *	08.09.2026	850 MM	100.13	5.26	46	2.15	2k+1k	● A-	AU / Basic Mat.	MWC (10bp), Global

Yields are annualized.

See last page for abbreviations, explanations and disclaimer.

Isin	Ccy	Cpn	Issuer	Maturity	Amnt Out.	Ask	Yield	D/Swap	Durat.	Pieces ESG	Rating	Cty / Sector	Miscellaneous
US24422EXD65	USD	5.150	JOHN DEERE CAPITAL CORP	08.09.2026	550 MM	100.28	5.08	28	2.16	1k+1k	● A	US / Industrial	W/Tax, Dom.
US437076BN13	USD	2.125	HOME DEPOT INC	15.09.2026	1 B	93.75	5.03	24	2.24	2k+1k	● A	US / Retail	W/Tax, C 2026@100, MWC (15bp), Glob
USQ98236AC80	USD	3.700	WOODSIDE FINANCE LTD	15.09.2026	800 MM	95.57	5.82	103	2.20	2k+1k	● BBB+	AU / Energy	C 2026@100, MWC (35bp)
US06368FAC32	USD	1.250	BANK OF MONTREAL	15.09.2026	1.3 B	91.55	5.17	38	2.26	2k+1k	● A-	CA / Banks	Dom., MWC (10bp)
US09261XAB82	USD	2.750	BLACKSTONE SECURED LEND	16.09.2026	699.2 MM	92.47	6.33	154	2.22	2k+1k	● BBB-	US / Financial	W/Tax, C 2026@100, MWC (50bp), Glob
US427096AH50	USD	2.625	HERCULES CAPITAL INC	16.09.2026	325 MM	91.25	6.81	201	2.21	2k+1k	● BBB-	US / Financial	W/Tax, Dom., C 2026@100, MWC (30bp)
US44891CCM38	USD	5.950	HYUNDAI CAPITAL AMERICA *	21.09.2026	700 MM	100.67	5.72	93	2.17	2k+1k	● BBB+	US / Auto	W/Tax, MWC (20bp)
US44891CAK99	USD	2.750	HYUNDAI CAPITAL AMERICA *	27.09.2026	500 MM	93.63	5.72	93	2.25	2k+1k	● BBB+	US / Auto	W/Tax, MWC (20bp)
USQ3958YAC77	USD	3.400	GAIF BOND ISSUER P/L	30.09.2026	600 MM	95.16	5.66	88	2.25	2k+1k	● A-	AU / Real Estate	C 2026@100, MWC (30bp)
USY68851AK32	USD	7.625	PETROLIAM NASIONAL BHD	15.10.2026	500 MM	105.32	5.34	57	2.21	100k+1k	● A-	MY / Energy	GU
US23331ABQ13	USD	1.300	D.R. HORTON INC *	15.10.2026	600 MM	90.95	5.38	60	2.34	2k+1k	● BBB+	US / Industrial	W/Tax, C 2026@100, MWC (10bp), Glob
US291011BP85	USD	0.875	EMERSON ELECTRIC CO	15.10.2026	750 MM	90.56	5.10	33	2.36	1k+1k	● A	US / Industrial	W/Tax, Dom., C 2026@100, MWC (10bp)
US86562MAK62	USD	3.010	SUMITOMO MITSUI FINL GRP	19.10.2026	1.5 B	94.75	5.39	62	2.31	2k+1k	● A-	JP / Banks	W/Tax, Global
US67103HAM97	USD	5.750	O'REILLY AUTOMOTIVE INC	20.11.2026	750 MM	101.04	5.37 c	60	2.20	2k+1k	● BBB	US / Auto	W/Tax, C 2026@100, MWC (15bp), Glob
US172967KY63	USD	3.200	CITIGROUP INC *	21.10.2026	3 B	95.00	5.48	71	2.31	1k+1k	● BBB+	US / Banks	W/Tax, Dom., C 2026@100, MWC (25bp)
US29273VAR15	USD	6.050	ENERGY TRANSFER LP	01.12.2026	1 B	101.62	5.41 c	65	2.22	2k+1k	● BBB-	US / Energy	W/Tax, C 2026@100, MWC (20bp), Glob
US44891CBD48	USD	3.500	HYUNDAI CAPITAL AMERICA *	02.11.2026	700 MM	95.22	5.67	90	2.33	2k+1k	● BBB+	US / Auto	W/Tax, C 2026@100, MWC (30bp)
US025816CM94	USD	1.650	AMERICAN EXPRESS CO	04.11.2026	1.1 B	91.69	5.32	56	2.38	2k+1k	● BBB+	US / Financial	W/Tax, C 2026@100, Global
US64110LAN64	USD	4.375	NETFLIX INC	15.11.2026	1 B	98.06	5.27	52	2.30	2k+1k	● BBB	US / Comm.	W/Tax, MWC (50bp), Global
US89236TLD53	USD	5.400	TOYOTA MOTOR CREDIT CORP *	20.11.2026	900 MM	100.70	5.17	42	2.29	2k+1k	● A+	US / Auto	W/Tax, Global
US002824BF69	USD	3.750	ABBOTT LABORATORIES **	30.11.2026	1.7 B	97.40	4.90	16	2.37	2k+1k	● AA-	US / Healthcare	W/Tax, C 2026@100, MWC (25bp), Glob
US26442CAS35	USD	2.950	DUKE ENERGY CAROLINAS	01.12.2026	600 MM	94.95	5.14	40	2.39	2k+1k	● A	US / Utilities	W/Tax, MBS, C 2026@100, MWC (15bp)
US883556CZ38	USD	5.000	THERMO FISHER SCIENTIFIC	05.12.2026	1 B	100.14	5.00	26	2.34	2k+1k	● A-	US / Healthcare	W/Tax, C 2026@100, MWC (10bp), Glob
US89115A2V36	USD	5.264	TORONTO-DOMINION BANK	11.12.2026	500 MM	100.28	5.21	47	2.35	2k+1k	● A	CA / Banks	MWC (15bp), Global
US06368LC537	USD	5.266	BANK OF MONTREAL	11.12.2026	1.15 B	100.13	5.28	54	2.34	2k+1k	● A-	CA / Banks	MWC (15bp), Global

Yields are annualized.

See last page for abbreviations, explanations and disclaimer.

Isin	Ccy	Cpn	Issuer	Maturity	Amnt Out.	Ask	Yield	D/Swap	Durat.	Pieces ESG	Rating	Cty / Sector	Miscellaneous
US776743AD85	USD	3.800	ROPER TECHNOLOGIES INC	15.12.2026	700 MM	96.52	5.31	58	2.40	2k+1k	BBB	US / Technology	W/Tax, C 2026@100, MWC (25bp), Glob
US26884UAC36	USD	4.750	EPR PROPERTIES	15.12.2026	450 MM	96.47	6.33	160	2.36	2k+1k	BBB-	US / Real Estate	W/Tax, C 2026@100, MWC (40bp), Glob
US09261HAD98	USD	2.625	BLACKSTONE PRIVATE CRE *	15.12.2026	1.2 B	91.34	6.38	164	2.43	2k+1k	BBB-	US / Financial	W/Tax, C 2026@100, MWC (30bp), Glob
US26441CCB90	USD	4.850	DUKE ENERGY CORP	05.01.2027	600 MM	98.99	5.33	61	2.42	2k+1k	BBB	US / Utilities	W/Tax, MWC (15bp), Global
US86562MAN02	USD	3.446	SUMITOMO MITSUI FINL GRP	11.01.2027	1.25 B	95.53	5.33	61	2.48	2k+1k	A-	JP / Banks	W/Tax, Global
US745867AX94	USD	5.000	PULTEGROUP INC	15.01.2027	443.9 MM	99.08	5.44	73	2.44	2k+1k	BBB	US / Industrial	W/Tax, C 2026@100, MWC (50bp), Glob
US743315AR46	USD	2.450	PROGRESSIVE CORP	15.01.2027	500 MM	93.52	5.12	41	2.53	2k+1k	A	US / Insurance	W/Tax, MWC (15bp), Global
US69121KAF12	USD	2.625	BLUE OWL CAPITAL CORP	15.01.2027	500 MM	91.48	6.20	149	2.51	2k+1k	BBB-	US / Financial	W/Tax, Dom., C 2026@100, MWC (30bp)
US04010LBE20	USD	7.000	ARES CAPITAL CORP	15.01.2027	900 MM	102.24	6.17	146	2.38	2k+1k	BBB-	US / Financial	W/Tax, MWC (40bp), Global
US78016HJT03	USD	4.875	ROYAL BANK OF CANADA *	19.01.2027	1.25 B	99.38	5.19	48	2.46	1k+1k	A	CA / Banks	Global
US459200JR30	USD	3.300	IBM CORP *	27.01.2027	500 MM	95.73	5.06	35	2.53	100k+1k	A-	US / Technology	W/Tax, MWC (15bp), Global
US20030NBY67	USD	3.300	COMCAST CORP	01.02.2027	1.25 B	95.80	5.02	32	2.55	2k+1k	A-	US / Comm.	W/Tax, Dom., C 2026@100, MWC (15bp)
US278865BL34	USD	1.650	ECOLAB INC	01.02.2027	500 MM	91.71	4.99	29	2.60	2k+1k	A-	US / Chemical	W/Tax, C 2027@100, MWC (7bp), Globa
US842400JA26	USD	4.875	SOUTHERN CAL EDISON *	01.02.2027	500 MM	99.23	5.24	54	2.49	1k+1k	A-	US / Utilities	W/Tax, MBS, C 2027@100, MWC (15bp)
US449276AB03	USD	4.600	IBM INTERNAT CAPITAL *	05.02.2027	500 MM	98.47	5.27	57	2.51	100k+1k	A-	US / Technology	W/Tax, C 2027@100, MWC (10bp), Glob
US00206RHW51	USD	3.800	AT&T INC *	15.02.2027	759.0 MM	96.31	5.32	62	2.56	1k+1k	BBB	US / Telecom	W/Tax, C 2026@100, MWC (25bp), Glob
US595112BP79	USD	4.185	MICRON TECHNOLOGY INC	15.02.2027	900 MM	97.08	5.40	71	2.55	2k+1k	BBB-	US / Technology	W/Tax, C 2026@100, MWC (35bp), Glob
US713466AA86	USD	4.650	PEPSICO SINGAPORE FIN	16.02.2027	550 MM	99.16	5.04	35	2.54	2k+1k	A+	US / Food	W/Tax, C 2027@100, MWC (10bp), Glob
US606822AN45	USD	3.677	MITSUBISHI UFJ FIN GRP	22.02.2027	1 B	96.12	5.25	57	2.59	2k+1k	A-	JP / Banks	W/Tax, Global
US110122EE42	USD	4.900	BRISTOL-MYERS SQUIBB CO	22.02.2027	1 B	99.65	5.10	41	2.55	2k+1k	A	US / Healthcare	W/Tax, C 2027@100, MWC (10bp), Glob
US37045XDR44	USD	2.350	GENERAL MOTORS FINL CO *	26.02.2027	1 B	91.92	5.58	89	2.64	2k+1k	BBB	US / Auto	W/Tax, C 2027@100, MWC (15bp), Glob
US17275RBQ48	USD	4.800	CISCO SYSTEMS INC *	26.02.2027	2 B	99.75	4.96	27	2.57	2k+1k	A+	US / Telecom	W/Tax, C 2027@100, MWC (10bp), Glob
XS2434895988	USD	3.000	ROMANIA	27.02.2027	1.35 B	92.80	5.90	122	2.61	2k+2k	BBB-	RO / Sovereign	
US438516CE43	USD	1.100	HONEYWELL INTERNATIONAL	01.03.2027	1 B	90.21	4.92	24	2.71	2k+1k	A	US / Technology	W/Tax, C 2027@100, MWC (10bp), Glob
US03740MAA80	USD	5.125	AON NORTH AMERICA INC *	01.03.2027	600 MM	100.00	5.19	51	2.57	2k+1k	BBB	US / Insurance	W/Tax, C 2027@100, MWC (15bp), Glob

Yields are annualized.

See last page for abbreviations, explanations and disclaimer.

Isin	Ccy	Cpn	Issuer	Maturity	Amnt Out.	Ask	Yield	D/Swap	Durat.	Pieces ESG	Rating	Cty / Sector	Miscellaneous
US961214DK65	USD	3.350	WESTPAC BANKING CORP	08.03.2027	1 B	95.55	5.12	44	2.64	2k+1k	AA-	AU / Banks	Global
US06368FAJ84	USD	2.650	BANK OF MONTREAL	08.03.2027	1.25 B	93.50	5.21	53	2.66	2k+1k	● A-	CA / Banks	Dom., MWC (15bp)
US2027A1KK25	USD	2.552	COMMONWEALTH BANK AUST *	14.03.2027	1 B	93.41	5.13	45	2.69	2k+1k	● AA-	AU / Banks	
US88947EAS90	USD	4.875	TOLL BROS FINANCE CORP	15.03.2027	450 MM	98.40	5.56	89	2.61	2k+1k	● BBB-	US / Industrial	W/Tax, C 2026@100, MWC (50bp), Glob
US09247XAN12	USD	3.200	BLACKROCK INC	15.03.2027	700 MM	95.84	4.83	16	2.67	2k+1k	● AA-	US / Financial	W/Tax, Dom., MWC (12bp)
US09261HAK32	USD	3.250	BLACKSTONE PRIVATE CRE *	15.03.2027	992.2 MM	92.54	6.23	156	2.65	2k+1k	● BBB-	US / Financial	W/Tax, C 2027@100, MWC (35bp), Glob
US92343VFF67	USD	3.000	VERIZON COMMUNICATIONS *	22.03.2027	750 MM	94.35	5.20	54	2.69	2k+1k	● BBB+	US / Telecom	W/Tax, C 2027@100, MWC (35bp), Glob
USQ8352BAC83	USD	3.750	SCENTRE GROUP TRUST 1/2	23.03.2027	500 MM	95.13	5.68	102	2.66	2k+1k	● A	AU / Real Estate	C 2026@100, MWC (20bp)
US458140BQ26	USD	3.750	INTEL CORP *	25.03.2027	1 B	96.43	5.16	49	2.67	2k+1k	● A-	US / Technology	W/Tax, C 2027@100, MWC (50bp), Glob
US742718FG98	USD	2.800	PROCTER & GAMBLE CO/THE *	25.03.2027	500 MM	94.73	4.83	17	2.71	2k+1k	● AA-	US / Retail	W/Tax, MWC (35bp), Global
US654106AJ22	USD	2.750	NIKE INC *	27.03.2027	1 B	94.33	4.94	27	2.72	2k+1k	● A+	US / Retail	W/Tax, C 2027@100, MWC (30bp), Glob
US440452AK64	USD	4.800	HORMEL FOODS CORP	30.03.2027	500 MM	99.48	5.05	39	2.65	2k+1k	A-	US / Food	W/Tax, C 2027@100, MWC (10bp), Glob
US68389XBU81	USD	2.800	ORACLE CORP	01.04.2027	2.25 B	93.44	5.34	67	2.72	2k+1k	● BBB	US / Technology	W/Tax, C 2027@100, MWC (35bp), Glob
US548661EG89	USD	3.350	LOWE'S COS INC	01.04.2027	750 MM	95.30	5.18	52	2.70	2k+1k	● BBB+	US / Retail	W/Tax, C 2027@100, MWC (15bp), Glob
US37045XDW39	USD	5.000	GENERAL MOTORS FINL CO *	09.04.2027	1.25 B	98.90	5.49	83	2.67	2k+1k	BBB	US / Auto	W/Tax, C 2027@100, MWC (30bp), Glob
US023135CF19	USD	3.300	AMAZON.COM INC *	13.04.2027	2 B	95.74	4.94	28	2.74	2k+1k	A+	US / Comm.	W/Tax, C 2027@100, MWC (10bp), Glob
US74340XBN03	USD	2.125	PROLOGIS LP	15.04.2027	500 MM	91.92	5.19	53	2.78	2k+1k	● A-	US / Real Estate	W/Tax, C 2027@100, MWC (15bp), Glob
US91159HHR49	USD	3.150	US BANCORP	27.04.2027	1.3 B	94.85	5.10	45	2.78	1k+1k	A-	US / Banks	W/Tax, Dom., C 2027@100
US097023CU76	USD	5.040	BOEING CO	01.05.2027	2 B	97.82	5.93	129	2.71	2k+1k	BBB-	US / Industrial	W/Tax, Step Rtg, C 2027@100, MWC (50bp), Glob
US0258M0EL96	USD	3.300	AMERICAN EXPRESS CREDIT	03.05.2027	339.4 MM	95.37	5.05	41	2.79	2k+1k	● A-	US / Financial	W/Tax, Dom., C 2027@100
3 to 5 years													
US316773DA59	USD	2.550	FIFTH THIRD BANCORP	05.05.2027	750 MM	92.21	5.47	83	2.82	2k+1k	● BBB+	US / Banks	W/Tax, C 2027@100, MWC (35bp), Glob
US037833CR93	USD	3.200	APPLE INC *	11.05.2027	2 B	95.44	4.91	27	2.78	2k+1k	● AA+	US / Technology	W/Tax, C 2027@100, MWC (15bp), Glob
US04010LBD47	USD	2.875	ARES CAPITAL CORP	15.06.2027	500 MM	91.83	5.87	125	2.87	2k+1k	BBB-	US / Financial	W/Tax, Dom., C 2027@100, MWC (25bp), Glob
US844741BK34	USD	5.125	SOUTHWEST AIRLINES CO **	15.06.2027	1.8 B	99.22	5.47	85	2.78	2k+1k	BBB	US / Transport	W/Tax, C 2027@100, MWC (50bp), Glob

Yields are annualized.

See last page for abbreviations, explanations and disclaimer.

Isin	Ccy	Cpn	Issuer	Maturity	Amnt Out.	Ask	Yield	D/Swap	Durat.	Pieces ESG	Rating	Cty / Sector	Miscellaneous
US828807DC85	USD	3.375	SIMON PROPERTY GROUP LP *	15.06.2027	750 MM	95.06	5.18	56	2.85	2k+1k	A-	US / Real Estate	W/Tax, C 2027@100, MWC (20bp), Glob
US15089QAM69	USD	6.165	CELANESE US HOLDINGS LLC	15.07.2027	2 B	101.27	5.79 c	117	2.74	2k+1k	BBB-	US / Chemical	W/Tax, Step Rtg, C 2027@100, MWC (50bp), Glob
US037833CX61	USD	3.000	APPLE INC *	20.06.2027	1 B	94.70	4.91	29	2.89	2k+1k	AA+	US / Technology	W/Tax, C 2027@100, MWC (12bp), Glob
US86562MAR16	USD	3.364	SUMITOMO MITSUI FINL GRP	12.07.2027	1.75 B	94.70	5.26	65	2.93	2k+1k	A-	JP / Banks	W/Tax, Global
US606822AR58	USD	3.287	MITSUBISHI UFJ FIN GRP	25.07.2027	1 B	94.41	5.26	66	2.97	2k+1k	A-	JP / Banks	W/Tax, Global
US459200KT76	USD	4.150	IBM CORP *	27.07.2027	750 MM	97.19	5.17	56	2.93	100k+1k	A-	US / Technology	W/Tax, C 2027@100, MWC (15bp), Glob
US89788MAC64	USD	1.125	TRUIST FINANCIAL CORP	03.08.2027	750 MM	87.90	5.30	70	3.09	2k+1k	A- (wl-)	US / Banks	W/Tax, Dom., C 2027@100
US37045XDA19	USD	2.700	GENERAL MOTORS FINL CO *	20.08.2027	900 MM	91.90	5.49	90	3.06	2k+1k	BBB	US / Auto	W/Tax, C 2027@100, MWC (35bp), Glob
US961214FC22	USD	4.043	WESTPAC BANKING CORP	26.08.2027	1 B	97.19	5.04	44	3.02	2k+1k	AA-	AU / Banks	Global
US22822VAH42	USD	3.650	CROWN CASTLE INC	01.09.2027	1 B	94.65	5.51	92	3.04	2k+1k	BBB-	US / Real Estate	W/Tax, C 2027@100, MWC (20bp), Glob
US037833DB33	USD	2.900	APPLE INC *	12.09.2027	2 B	94.05	4.91	32	3.12	2k+1k	AA+	US / Technology	W/Tax, C 2027@100, MWC (15bp), Glob
US686330AQ49	USD	5.000	ORIX CORP	13.09.2027	500 MM	98.48	5.58	99	3.02	2k+1k	BBB+	JP / Financial	W/Tax, Global
US418056AV91	USD	3.500	HASBRO INC	15.09.2027	500 MM	93.93	5.58	99	3.09	2k+1k	BBB	US / Retail	W/Tax, C 2027@100, MWC (25bp), Glob
US2027A1JT52	USD	3.150	COMMONWEALTH BANK AUST *	19.09.2027	700 MM	93.63	5.31	72	3.12	2k+1k	AA-	AU / Banks	
USQ66345AA95	USD	4.400	NEWCASTLE COAL INFRASTRU	29.09.2027	496.5 MM	94.42	6.35	177	3.07	2k+1k	BBB+	AU / Basic Mat.	Secured, C 2027@100, MWC (35bp)
US37045VAN01	USD	4.200	GENERAL MOTORS CO *	01.10.2027	750 MM	96.05	5.56	99	3.10	2k+1k	BBB	US / Auto	W/Tax, C 2027@100, MWC (30bp), Glob
US44891CBP77	USD	2.375	HYUNDAI CAPITAL AMERICA *	15.10.2027	650 MM	90.23	5.61	104	3.22	2k+1k	BBB+	US / Auto	W/Tax, C 2027@100, MWC (30bp)
US86562MAV28	USD	3.352	SUMITOMO MITSUI FINL GRP	18.10.2027	750 MM	94.14	5.30	73	3.19	2k+1k	A-	JP / Banks	W/Tax, Global
US06051GGA13	USD	3.248	BANK OF AMERICA CORP *	21.10.2027	2.5 B	94.36	5.11	54	3.20	2k+1k	A-	US / Banks	W/Tax, Dom., C 2026@100, MWC (25bp)
US78016FZU10	USD	6.000	ROYAL BANK OF CANADA *	01.11.2027	1.35 B	102.88	5.15	59	3.11	2k+1k	A	CA / Banks	MWC (25bp), Global
US911312BM79	USD	3.050	UNITED PARCEL SERVICE	15.11.2027	1 B	93.66	5.10	54	3.23	2k+1k	A	US / Transport	W/Tax, Dom., C 2027@100, MWC (15bp)
US961214FK48	USD	5.457	WESTPAC BANKING CORP	18.11.2027	1.25 B	101.22	5.14	58	3.10	2k+1k	AA-	AU / Banks	Global
XS2485248806	USD	5.250	ROMANIA	25.11.2027	1 B	97.60	6.10	155	3.11	2k+2k	BBB-	RO / Sovereign	
US00912XAY04	USD	3.625	AIR LEASE CORP	01.12.2027	500 MM	93.96	5.59	104	3.22	2k+1k	BBB	US / Services	W/Tax, C 2027@100, MWC (25bp), Glob
US828807DE42	USD	3.375	SIMON PROPERTY GROUP LP *	01.12.2027	750 MM	94.28	5.22	66	3.25	2k+1k	A-	US / Real Estate	W/Tax, C 2027@100, MWC (20bp), Glob

Yields are annualized.

See last page for abbreviations, explanations and disclaimer.

Isin	Ccy	Cpn	Issuer	Maturity	Amnt Out.	Ask	Yield	D/Swap	Durat.	Pieces ESG	Rating	Cty / Sector	Miscellaneous
US37045XCG97	USD	3.850	GENERAL MOTORS FINL CO *	05.01.2028	400 MM	94.54	5.59	106	3.30	2k+1k	BBB	US / Auto	W/Tax, C 2027@100, MWC (25bp), Glob
US11134LAR06	USD	3.500	BROADCOM CRP / CAYMN FI *	15.01.2028	776.5 MM	93.97	5.39	86	3.36	2k+1k	BBB	US / Technology	W/Tax, C 2027@100, MWC (20bp), Glob
US03027XAR17	USD	3.600	AMERICAN TOWER CORP *	15.01.2028	700 MM	93.87	5.53	100	3.35	2k+1k	● BBB-	US / Real Estate	W/Tax, C 2027@100, MWC (20bp), Glob
US29273VAP58	USD	5.550	ENERGY TRANSFER LP	15.02.2028	1 B	100.57	5.45 c	93	3.32	2k+1k	BBB-	US / Energy	W/Tax, C 2028@100, MWC (30bp), Glob
US86562MAY66	USD	3.544	SUMITOMO MITSUI FINL GRP	17.01.2028	750 MM	94.43	5.29	75	3.36	2k+1k	● A-	JP / Banks	W/Tax, Global
US11271LAC63	USD	3.900	BROOKFIELD FINANCE INC	25.01.2028	1.05 B	95.63	5.27	75	3.36	2k+1k	A-	CA / Financial	Dom., C 2027@100, MWC (25bp)
US961214DW04	USD	3.400	WESTPAC BANKING CORP	25.01.2028	1 B	94.27	5.18	65	3.39	2k+1k	AA-	AU / Banks	Global
US06406RAF47	USD	3.400	BANK OF NY MELLON CORP	29.01.2028	750 MM	94.53	5.09	56	3.40	1k+1k	● A	US / Banks	W/Tax, Dom., C 2027@100
US002824BP42	USD	1.150	ABBOTT LABORATORIES *	30.01.2028	650 MM	87.68	4.85	33	3.56	2k+1k	● AA-	US / Healthcare	W/Tax, C 2027@100, MWC (12bp), Glob
US06368LGV27	USD	5.203	BANK OF MONTREAL	01.02.2028	1.2 B	100.28	5.18	66	3.31	2k+1k	● A-	CA / Banks	C 2028@100, MWC (20bp), Global
US828807DL84	USD	1.750	SIMON PROPERTY GROUP LP *	01.02.2028	800 MM	88.45	5.26	73	3.51	2k+1k	A-	US / Real Estate	W/Tax, C 2027@100, MWC (15bp), Glob
US87264AAV70	USD	4.750	T-MOBILE USA INC	01.02.2028	1.5 B	97.96	5.43	91	3.33	2k+1k	BBB	US / Telecom	W/Tax, Dom., C 2024@101.58, MWC (50bp), Glob
US459200KX88	USD	4.500	IBM CORP *	06.02.2028	1 B	98.09	5.13	61	3.36	100k+1k	● A-	US / Technology	W/Tax, C 2028@100, MWC (15bp), Glob
US037833EC07	USD	1.200	APPLE INC *	08.02.2028	2.5 B	87.70	4.88	36	3.57	2k+1k	● AA+	US / Technology	W/Tax, C 2027@100, MWC (7bp), Globa
US458140CE86	USD	4.875	INTEL CORP *	10.02.2028	1.75 B	99.16	5.19	67	3.35	2k+1k	● A-	US / Technology	W/Tax, C 2028@100, MWC (20bp), Glob
US718172CZ06	USD	4.875	PHILIP MORRIS INTL INC	15.02.2028	1.55 B	99.01	5.23	71	3.36	2k+1k	A-	US / Tobacco	W/Tax, C 2028@100, MWC (20bp), Glob
US22822VAK70	USD	3.800	CROWN CASTLE INC	15.02.2028	1 B	94.05	5.65	113	3.41	2k+1k	BBB-	US / Real Estate	W/Tax, C 2027@100, MWC (20bp), Glob
XS2571922884	USD	6.625	ROMANIA	17.02.2028	1.6 B	101.65	6.22	170	3.26	2k+2k	● BBB-	RO / Sovereign	
US110122DE50	USD	3.900	BRISTOL-MYERS SQUIBB CO	20.02.2028	1.45 B	95.69	5.23	71	3.43	2k+1k	● A	US / Healthcare	W/Tax, C 2027@100, MWC (20bp), Glob
US620076BL24	USD	4.600	MOTOROLA SOLUTIONS INC	23.02.2028	700 MM	97.56	5.39	87	3.40	2k+1k	● BBB	US / Telecom	W/Tax, C 2027@100, MWC (25bp), Glob
US055451AZ15	USD	4.750	BHP BILLITON FIN USA LTD **	28.02.2028	1 B	98.88	5.14	62	3.41	2k+1k	A-	AU / Basic Mat.	C 2028@100, MWC (15bp), Global
US15189YAG17	USD	5.250	CENTERPOINT ENERGY RES	01.03.2028	900 MM	99.95	5.33	82	3.38	2k+1k	BBB+	US / Utilities	W/Tax, C 2028@100, MWC (20bp), Glob
US337738BD90	USD	5.450	FISERV INC	02.03.2028	900 MM	100.35	5.42	90	3.38	2k+1k	BBB	US / Technology	W/Tax, C 2028@100, MWC (20bp), Glob
US606822AV60	USD	3.961	MITSUBISHI UFJ FIN GRP	02.03.2028	1.3 B	95.81	5.25	74	3.46	2k+1k	● A-	JP / Banks	W/Tax, Global
US316773CV06	USD	3.950	FIFTH THIRD BANCORP	14.03.2028	650 MM	94.72	5.56	105	3.48	2k+1k	● BBB+	US / Banks	W/Tax, Dom., C 2028@100

Yields are annualized.

See last page for abbreviations, explanations and disclaimer.

Isin	Ccy	Cpn	Issuer	Maturity	Amnt Out.	Ask	Yield	D/Swap	Durat.	Pieces ESG	Rating	Cty / Sector	Miscellaneous
US94106LBN82	USD	1.150	WASTE MANAGEMENT INC	15.03.2028	500 MM	86.60	5.08	57	3.67	2k+1k	● A-	US / Industrial	W/Tax, C 2028@100, MWC (10bp), Glob
USQ98229AM12	USD	3.700	WOODSIDE FINANCE LTD	15.03.2028	800 MM	93.25	5.75	124	3.50	2k+1k	●●● BBB+	AU / Energy	C 2027@100, MWC (25bp)
USU3827BAA53	USD	3.700	GOODMAN US FIN THREE	15.03.2028	525 MM	92.24	6.07	156	3.49	2k+1k	●●● BBB+	AU / Real Estate	W/Tax, C 2027@100, MWC (25bp)
US2027A1JZ13	USD	3.900	COMMONWEALTH BANK AUST *	16.03.2028	1 B	96.03	5.11	60	3.50	2k+1k	●●● AA-	AU / Banks	
US126650CX62	USD	4.300	CVS HEALTH CORP	25.03.2028	5 B	96.41	5.40	90	3.50	2k+1k	●●● BBB	US / Healthcare	W/Tax, C 2027@100, MWC (25bp), Glob
US874054AK58	USD	4.950	TAKE-TWO INTERACTIVE SOF	28.03.2028	800 MM	98.64	5.41	91	3.47	2k+1k	●●● BBB	US / Technology	W/Tax, C 2028@100, MWC (25bp), Glob
US44891CCD39	USD	5.600	HYUNDAI CAPITAL AMERICA *	30.03.2028	800 MM	99.88	5.71	121	3.44	2k+1k	●●● BBB+	US / Auto	W/Tax, C 2028@100, MWC (30bp)
US65473PAN50	USD	5.250	NISOURCE INC	30.03.2028	1.05 B	99.78	5.38	88	3.46	2k+1k	●●● BBB	US / Utilities	W/Tax, C 2028@100, MWC (25bp), Glob
US23338VAN64	USD	1.900	DTE ELECTRIC CO	01.04.2028	575 MM	88.87	5.15	65	3.67	2k+1k	●●● A	US / Utilities	W/Tax, MBS, C 2028@100, MWC (10bp)
US37045XDH61	USD	2.400	GENERAL MOTORS FINL CO *	10.04.2028	1 B	89.06	5.62	112	3.65	2k+1k	●●● BBB	US / Auto	W/Tax, C 2028@100, MWC (20bp), Glob
US084659AM36	USD	3.250	BERKSHIRE HATHAWAY ENERG	15.04.2028	599.7 MM	93.31	5.21	72	3.62	2k+1k	●●● A-	US / Utilities	W/Tax, C 2028@100, MWC (15bp), Glob
US69047QAB86	USD	5.650	OVINTIV INC	15.05.2028	700 MM	100.71	5.52 c	103	3.40	2k+1k	●●● BBB-	US / Energy	W/Tax, C 2028@100, MWC (35bp), Glob
US20030NCH26	USD	3.550	COMCAST CORP	01.05.2028	1 B	94.50	5.16	67	3.64	2k+1k	●●● A-	US / Comm.	W/Tax, C 2028@100, MWC (15bp), Glob
US037833ET32	USD	4.000	APPLE INC *	10.05.2028	1.5 B	97.35	4.79	31	3.58	2k+1k	●●● AA+	US / Technology	W/Tax, C 2028@100, MWC (10bp), Glob
US341081GN15	USD	4.400	FLORIDA POWER & LIGHT CO	15.05.2028	750 MM	97.90	5.05	56	3.56	2k+1k	●●● A+	US / Utilities	W/Tax, MBS, C 2028@100, MWC (15bp)
US539830BZ19	USD	4.450	LOCKHEED MARTIN CORP *	15.05.2028	500 MM	98.10	5.04	55	3.55	2k+1k	●●● A-	US / Industrial	W/Tax, C 2028@100, MWC (15bp), Glob
US716973AC67	USD	4.450	PFIZER INVESTMENT ENTER *	19.05.2028	4 B	97.61	5.18	69	3.56	2k+1k	●●● A	US / Healthcare	W/Tax, C 2028@100, MWC (15bp), Glob
US44891CCH43	USD	5.680	HYUNDAI CAPITAL AMERICA *	26.06.2028	1 B	100.34	5.66 c	119	3.57	2k+1k	●●● BBB+	US / Auto	W/Tax, C 2028@100, MWC (30bp)
US404119CP27	USD	5.200	HCA INC	01.06.2028	1 B	99.36	5.45	97	3.53	2k+1k	●●● BBB-	US / Healthcare	W/Tax, C 2028@100, MWC (25bp), Glob
US06418GAD97	USD	5.250	BANK OF NOVA SCOTIA *	12.06.2028	750 MM	100.27	5.24	77	3.56	2k+1k	●●● A-	CA / Banks	MWC (25bp), Global
US44891CBX02	USD	2.000	HYUNDAI CAPITAL AMERICA *	15.06.2028	850 MM	87.01	5.66	118	3.81	2k+1k	●●● BBB+	US / Auto	W/Tax, C 2028@100, MWC (15bp)
US65339KBW99	USD	1.900	NEXTERA ENERGY CAPITAL	15.06.2028	1.5 B	87.66	5.35	88	3.82	2k+1k	●●● BBB+	US / Utilities	W/Tax, C 2028@100, MWC (10bp), Glob
US74340XCG43	USD	4.875	PROLOGIS LP	15.06.2028	750 MM	99.19	5.16	68	3.60	2k+1k	●●● A-	US / Real Estate	W/Tax, C 2028@100, MWC (20bp), Glob
US02665WEM91	USD	5.125	AMERICAN HONDA FINANCE	07.07.2028	800 MM	100.11	5.16	69	3.65	2k+1k	●●● A-	US / Auto	W/Tax, MWC (15bp), Global
US86562MBC38	USD	3.944	SUMITOMO MITSUI FINL GRP	19.07.2028	750 MM	95.23	5.29	82	3.76	2k+1k	●●● A-	JP / Banks	W/Tax, Global

Yields are annualized.

See last page for abbreviations, explanations and disclaimer.

Isin	Ccy	Cpn	Issuer	Maturity	Amnt Out.	Ask	Yield	D/Swap	Durat.	Pieces ESG	Rating	Cty / Sector	Miscellaneous
US78016HZS20	USD	5.200	ROYAL BANK OF CANADA **	01.08.2028	1 B	99.71	5.34	88	3.70	2k+1k	● A	CA / Banks	MWC (20bp), Global
US404119BW86	USD	5.875	HCA INC	01.02.2029	1 B	101.21	5.62 c	116	3.65	2k+1k	●●● BBB-	US / Healthcare	W/Tax, Dom., C 2028@100, MWC (50bp)
USU09513JQ39	USD	5.050	BMW US CAPITAL LLC	11.08.2028	1 B	99.83	5.16	70	3.74	2k+1k	● A	DE / Auto	W/Tax, C 2028@100, MWC (15bp)
US458140BT64	USD	1.600	INTEL CORP *	12.08.2028	1 B	86.86	5.13	67	4.00	2k+1k	●● A-	US / Technology	W/Tax, C 2028@100, MWC (10bp), Glob
US928563AK15	USD	1.800	VMWARE LLC	15.08.2028	750 MM	86.47	5.46	100	3.99	2k+1k	●●● BBB	US / Technology	W/Tax, C 2028@100, MWC (15bp), Glob
US797440CE27	USD	4.950	SAN DIEGO G & E	15.08.2028	600 MM	99.40	5.17	71	3.76	1k+1k	● A	US / Utilities	W/Tax, MBS, C 2028@100, MWC (15bp)
US969457CK40	USD	5.300	WILLIAMS COMPANIES INC	15.08.2028	900 MM	99.80	5.42	96	3.73	2k+1k	●●● BBB	US / Energy	W/Tax, C 2028@100, MWC (20bp), Glob
US04621WAF77	USD	6.125	ASSURED GUARANTY US HLDG	15.09.2028	350 MM	102.35	5.58 c	112	3.69	2k+1k	●●● BBB+	US / Insurance	W/Tax, C 2028@100, MWC (30bp), Glob
US44891CCN11	USD	6.100	HYUNDAI CAPITAL AMERICA *	21.09.2028	800 MM	101.79	5.70 c	124	3.71	2k+1k	●●● BBB+	US / Auto	W/Tax, C 2028@100, MWC (25bp)
US06368LWU69	USD	5.717	BANK OF MONTREAL	25.09.2028	1 B	102.04	5.25 c	79	3.75	2k+1k	●● A-	CA / Banks	C 2028@100, MWC (20bp), Global
US15189XBD93	USD	5.200	CENTERPOINT ENER HOUSTON	01.10.2028	500 MM	100.60	5.11 c	66	3.87	2k+1k	● A	US / Utilities	W/Tax, MBS, C 2028@100, MWC (15bp)
US718172DC02	USD	5.250	PHILIP MORRIS INTL INC	07.09.2028	650 MM	100.48	5.19	73	3.80	2k+1k	● A-	US / Tobacco	W/Tax, C 2028@100, MWC (20bp), Glob
US055451BC11	USD	5.100	BHP BILLITON FIN USA LTD *	08.09.2028	700 MM	100.02	5.16	70	3.81	2k+1k	● A-	AU / Basic Mat.	C 2028@100, MWC (15bp), Global
US907818EY04	USD	3.950	UNION PACIFIC CORP	10.09.2028	1.1 B	96.06	5.03	58	3.90	1k+1k	● A-	US / Transport	W/Tax, C 2028@100, MWC (20bp), Glob
US606822BC70	USD	4.050	MITSUBISHI UFJ FIN GRP	11.09.2028	1 B	96.16	5.11	65	3.89	2k+1k	● A-	JP / Banks	W/Tax, Global
US970648AG61	USD	4.500	WILLIS NORTH AMERICA INC	15.09.2028	600 MM	96.60	5.46	101	3.86	2k+1k	●●● BBB-	US / Insurance	W/Tax, C 2028@100, MWC (25bp), Glob
US744573AW69	USD	5.875	PUBLIC SERVICE ENTERPRIS	15.10.2028	600 MM	101.89	5.46 c	100	3.79	2k+1k	●●● BBB	US / Utilities	W/Tax, C 2028@100, MWC (20bp), Glob
US37045VAS97	USD	5.000	GENERAL MOTORS CO *	01.10.2028	750 MM	98.46	5.47	102	3.87	2k+1k	●●● BBB	US / Auto	W/Tax, C 2028@100, MWC (35bp), Glob
US682680BJ18	USD	5.650	ONEOK INC	01.11.2028	750 MM	101.26	5.40 c	95	3.85	2k+1k	●●● BBB	US / Energy	W/Tax, C 2028@100, MWC (25bp), Glob
US16411RAK59	USD	4.625	CHENIERE ENERGY INC	15.10.2028	1.5 B	96.29	5.66	121	3.93	2k+1k	●●● BBB-	US / Energy	W/Tax, C 2024@102.31, MWC (50bp), G
US125523AH38	USD	4.375	CIGNA GROUP/THE	15.10.2028	3.8 B	96.42	5.36	92	3.96	2k+1k	●●● BBB+	US / Healthcare	W/Tax, C 2028@100, MWC (25bp), Glob
US20030NCT63	USD	4.150	COMCAST CORP	15.10.2028	4 B	96.46	5.11	67	3.98	2k+1k	● A-	US / Comm.	W/Tax, C 2028@100, MWC (20bp), Glob
US832696AW80	USD	5.900	JM SMUCKER CO	15.11.2028	750 MM	102.62	5.30 c	86	3.76	2k+1k	●●● BBB	US / Food	W/Tax, C 2028@100, MWC (20bp), Glob
US03027XCE85	USD	5.800	AMERICAN TOWER CORP *	15.11.2028	750 MM	101.54	5.48 c	104	3.73	2k+1k	●●● BBB-	US / Real Estate	W/Tax, C 2028@100, MWC (25bp), Glob
US50212YAH71	USD	6.750	LPL HOLDINGS INC	17.11.2028	750 MM	104.26	5.73 c	129	3.70	2k+1k	●●● BBB-	US / Financial	W/Tax, C 2028@100, MWC (35bp), Glob

Yields are annualized.

See last page for abbreviations, explanations and disclaimer.

Isin	Ccy	Cpn	Issuer	Maturity	Amnt Out.	Ask	Yield	D/Swap	Durat.	Pieces ESG	Rating	Cty / Sector	Miscellaneous
US205887CC49	USD	4.850	CONAGRA BRANDS INC	01.11.2028	1.3 B	97.71	5.51	107	3.96	2k+1k	● BBB-	US / Food	W/Tax, C 2028@100, MWC (30bp), Glob
US29273VAS97	USD	6.100	ENERGY TRANSFER LP	01.12.2028	500 MM	102.65	5.50 c	106	3.79	2k+1k	● BBB-	US / Energy	W/Tax, C 2028@100, MWC (25bp), Glob
US78355HKX60	USD	6.300	RYDER SYSTEM INC	01.12.2028	400 MM	103.90	5.38 c	94	3.76	2k+1k	● BBB	US / Transport	W/Tax, C 2028@100, MWC (25bp), Glob
US10373QAE08	USD	4.234	BP CAP MARKETS AMERICA *	06.11.2028	2 B	96.96	5.06	62	4.03	1k+1k	● A-	US / Energy	W/Tax, Dom., C 2028@100, MWC (20bp)
US00287YBF51	USD	4.250	ABBVIE INC *	14.11.2028	1.75 B	97.16	5.02	59	3.97	2k+1k	● A-	US / Healthcare	W/Tax, C 2028@100, MWC (25bp), Glob
US21036PBC14	USD	4.650	CONSTELLATION BRANDS INC	15.11.2028	500 MM	97.56	5.33	90	3.92	2k+1k	● BBB-	US / Food	W/Tax, C 2028@100, MWC (25bp), Glob
US26442CAX20	USD	3.950	DUKE ENERGY CAROLINAS	15.11.2028	650 MM	95.54	5.13	70	3.99	2k+1k	● A	US / Utilities	W/Tax, MBS, C 2028@100, MWC (15bp)
US02665WEV90	USD	5.650	AMERICAN HONDA FINANCE	15.11.2028	800 MM	102.16	5.17	74	3.85	2k+1k	● A-	US / Auto	W/Tax, MWC (15bp), Global
US961214FN86	USD	5.535	WESTPAC BANKING CORP	17.11.2028	1.25 B	101.77	5.16	72	3.87	2k+1k	● AA-	AU / Banks	Global
US961214EW94	USD	1.953	WESTPAC BANKING CORP	20.11.2028	1.25 B	87.39	5.17	73	4.19	2k+1k	● AA-	AU / Banks	Global
US10112RBA14	USD	4.500	BOSTON PROPERTIES LP	01.12.2028	1 B	94.06	6.10	167	3.96	1k+1k	● BBB	US / Real Estate	W/Tax, Dom., C 2028@100, MWC (25bp)
US91324PDP45	USD	3.875	UNITEDHEALTH GROUP INC	15.12.2028	850 MM	95.41	5.07	64	4.08	2k+1k	● A	US / Healthcare	W/Tax, MWC (15bp), Global
US958667AF48	USD	6.350	WESTERN MIDSTREAM OPERAT	15.01.2029	600 MM	103.00	5.68 c	125	3.89	2k+1k	● BBB-	US / Energy	W/Tax, C 2028@100, MWC (30bp), Glob
US44891CCR25	USD	6.500	HYUNDAI CAPITAL AMERICA *	16.01.2029	700 MM	103.66	5.66 c	123	3.84	2k+1k	● BBB+	US / Auto	W/Tax, C 2028@100, MWC (30bp)
US89236TFT79	USD	3.650	TOYOTA MOTOR CREDIT CORP *	08.01.2029	500 MM	94.27	5.10	68	4.16	2k+1k	● A+	US / Auto	W/Tax, MWC (20bp), Global
US91324PEU21	USD	4.250	UNITEDHEALTH GROUP INC	15.01.2029	1.25 B	96.76	5.10	68	4.13	2k+1k	● A	US / Healthcare	W/Tax, C 2028@100, MWC (15bp), Glob
US21036PBQ00	USD	4.800	CONSTELLATION BRANDS INC	15.01.2029	400 MM	98.02	5.35	93	4.07	2k+1k	● BBB-	US / Food	W/Tax, C 2028@100, MWC (15bp), Glob
US025537AY74	USD	5.200	AMERICAN ELECTRIC POWER	15.01.2029	1 B	99.21	5.46	104	4.02	2k+1k	● BBB	US / Utilities	W/Tax, C 2028@100, MWC (20bp), Glob
US74460WAF41	USD	5.125	PUBLIC STORAGE OP CO	15.01.2029	500 MM	100.41	5.09	67	4.06	2k+1k	● A	US / Real Estate	W/Tax, C 2028@100, MWC (15bp), Glob
US24422EXH79	USD	4.500	JOHN DEERE CAPITAL CORP	16.01.2029	1 B	97.77	5.10	68	4.11	1k+1k	● A	US / Industrial	W/Tax, Dom.
US37045XCS36	USD	5.650	GENERAL MOTORS FINL CO *	17.01.2029	500 MM	99.99	5.73	131	4.00	2k+1k	● BBB	US / Auto	W/Tax, C 2028@100, MWC (45bp), Glob
US95000U2D40	USD	4.150	WELLS FARGO & COMPANY	24.01.2029	2.5 B	95.64	5.27	85	4.15	1k+1k	● BBB+	US / Banks	W/Tax, C 2028@100, MWC (25bp), Glob
US742718GF07	USD	4.350	PROCTER & GAMBLE CO/THE *	29.01.2029	600 MM	98.81	4.69	27	4.17	2k+1k	● AA-	US / Retail	W/Tax, MWC (5bp), Global
XS2756521212	USD	5.875	ROMANIA	30.01.2029	2 B	98.65	6.30	189	4.00	2k+2k	● BBB-	RO / Sovereign	
US883556DA77	USD	5.000	THERMO FISHER SCIENTIFIC	31.01.2029	1 B	99.92	5.08	66	4.08	2k+1k	● A-	US / Healthcare	W/Tax, C 2028@100, MWC (15bp), Glob

Yields are annualized.

See last page for abbreviations, explanations and disclaimer.

Isin	Ccy	Cpn	Issuer	Maturity	Amnt Out.	Ask	Yield	D/Swap	Durat.	Pieces ESG	Rating	Cty / Sector	Miscellaneous
US647551AF79	USD	6.875	NEW MOUNTAIN FINANCE COR	01.02.2029	300 MM	97.12	7.75	334	3.88	2k+1k	BBB-	US / Financial	W/Tax, C 2029@100, MWC (50bp), Glob
US494553AD27	USD	5.000	KINDER MORGAN INC	01.02.2029	1.25 B	98.52	5.43	101	4.10	2k+1k	BBB	US / Energy	W/Tax, C 2029@100, MWC (20bp), Glob
US92343VES97	USD	3.875	VERIZON COMMUNICATIONS *	08.02.2029	1 B	94.23	5.33	92	4.22	2k+1k	● BBB+	US / Telecom	W/Tax, C 2028@100, MWC (20bp), Glob
US882508CG73	USD	4.600	TEXAS INSTRUMENTS INC	08.02.2029	650 MM	98.64	4.98	57	4.17	2k+1k	● A+	US / Technology	W/Tax, C 2029@100, MWC (10bp), Glob
US718172DG16	USD	4.875	PHILIP MORRIS INTL INC	13.02.2029	1 B	98.46	5.31	90	4.15	2k+1k	A-	US / Tobacco	W/Tax, C 2029@100, MWC (15bp), Glob
US22822VAL53	USD	4.300	CROWN CASTLE INC	15.02.2029	600 MM	95.02	5.58	116	4.19	2k+1k	BBB-	US / Real Estate	W/Tax, C 2028@100, MWC (25bp), Glob
US756109CF99	USD	4.750	REALTY INCOME CORP	15.02.2029	450 MM	97.57	5.40	99	4.14	2k+1k	A-	US / Real Estate	W/Tax, C 2029@100, MWC (15bp), Glob
US94106LBV09	USD	4.875	WASTE MANAGEMENT INC	15.02.2029	750 MM	99.78	4.99	57	4.16	2k+1k	● A-	US / Industrial	W/Tax, C 2029@100, MWC (15bp), Glob
US713466AB69	USD	4.550	PEPSICO SINGAPORE FIN	16.02.2029	450 MM	98.27	5.02	61	4.19	2k+1k	A+	US / Food	W/Tax, C 2029@100, MWC (10bp), Glob
US110122EF17	USD	4.900	BRISTOL-MYERS SQUIBB CO	22.02.2029	1.75 B	99.27	5.14	73	4.18	2k+1k	● A	US / Healthcare	W/Tax, C 2029@100, MWC (15bp), Glob
US29717PAT49	USD	4.000	ESSEX PORTFOLIO LP	01.03.2029	500 MM	93.89	5.53	112	4.26	2k+1k	BBB+	US / Real Estate	W/Tax, C 2028@100, MWC (25bp), Glob
US907818FB91	USD	3.700	UNION PACIFIC CORP	01.03.2029	774.5 MM	94.57	5.04	64	4.30	1k+1k	● A-	US / Transport	W/Tax, C 2028@100, MWC (20bp), Glob
US03740MAB63	USD	5.150	AON NORTH AMERICA INC *	01.03.2029	1 B	99.56	5.32	92	4.17	2k+1k	BBB	US / Insurance	W/Tax, C 2029@100, MWC (15bp), Glob
US233331BK28	USD	5.100	DTE ENERGY CO	01.03.2029	1.2 B	98.42	5.55	114	4.16	2k+1k	● BBB	US / Utilities	W/Tax, C 2029@100, MWC (20bp), Glob
USQ98229AN94	USD	4.500	WOODSIDE FINANCE LTD	04.03.2029	1.5 B	95.20	5.73	132	4.22	2k+1k	BBB+	AU / Energy	C 2028@100, MWC (30bp)
US045167GD94	USD	4.375	ASIAN DEVELOPMENT BANK	06.03.2029	3.5 B	98.61	4.75	35	4.27	1k+1k	● AAA	Supranational	Global
US606822BH67	USD	3.741	MITSUBISHI UFJ FIN GRP	07.03.2029	1.5 B	93.94	5.24	83	4.31	2k+1k	● A-	JP / Banks	W/Tax, Global
US571748BG65	USD	4.375	MARSH & MCLENNAN COS INC	15.03.2029	1.5 B	97.40	5.04	64	4.28	2k+1k	● A-	US / Insurance	W/Tax, C 2028@100, MWC (25bp), Glob
US595017BE37	USD	5.050	MICROCHIP TECHNOLOGY INC	15.03.2029	1 B	99.23	5.30	89	4.21	2k+1k	BBB+	US / Technology	W/Tax, C 2029@100, MWC (15bp), Glob
US49271VAT70	USD	5.050	KEURIG DR PEPPER INC	15.03.2029	750 MM	99.36	5.27	86	4.22	2k+1k	BBB	US / Food	W/Tax, C 2029@100, MWC (15bp), Glob
US902494BL61	USD	5.400	TYSON FOODS INC *	15.03.2029	600 MM	99.89	5.50	109	4.18	2k+1k	BBB	US / Food	W/Tax, C 2029@100, MWC (20bp), Glob
US00287YDS54	USD	4.800	ABBVIE INC *	15.03.2029	2.5 B	99.05	5.08	68	4.24	2k+1k	● A-	US / Healthcare	W/Tax, C 2029@100, MWC (10bp), Glob
US88339WAB28	USD	4.900	WILLIAMS COMPANIES INC	15.03.2029	1.1 B	98.06	5.43	102	4.19	2k+1k	BBB	US / Energy	W/Tax, C 2029@100, MWC (20bp), Glob
US731011AX08	USD	4.625	REPUBLIC OF POLAND	18.03.2029	1.5 B	97.77	5.22	81	4.27	1k+1k	● A-	PL / Sovereign	C 2029@100, Global
US87165BAP85	USD	5.150	SYNCHRONY FINANCIAL	19.03.2029	650 MM	95.77	6.26	186	4.19	2k+1k	● BBB-	US / Services	W/Tax, C 2028@100, MWC (40bp), Glob

Yields are annualized.

See last page for abbreviations, explanations and disclaimer.

Isin	Ccy	Cpn	Issuer	Maturity	Amnt Out.	Ask	Yield	D/Swap	Durat.	Pieces ESG	Rating	Cty / Sector	Miscellaneous
US11271LAD47	USD	4.850	BROOKFIELD FINANCE INC	29.03.2029	1 B	98.21	5.34	94	4.27	2k+1k	A-	CA / Financial	Dom., C 2028@100, MWC (35bp)
US12505BAH33	USD	5.500	CBRE SERVICES INC	01.04.2029	500 MM	99.69	5.65	125	4.20	2k+1k	● BBB+	US / Real Estate	W/Tax, C 2029@100, MWC (20bp), Glob
US68235PAN87	USD	5.100	ONE GAS INC	01.04.2029	300 MM	100.12	5.13	73	4.26	2k+1k	● A-	US / Utilities	W/Tax, C 2029@100, MWC (15bp), Glob
US13608JAA51	USD	5.260	CANADIAN IMPERIAL BANK	08.04.2029	750 MM	99.18	5.53	113	4.26	2k+1k	● A-	CA / Banks	C 2029@100, MWC (15bp), Global
US40434LAK17	USD	4.000	HP INC *	15.04.2029	1 B	94.21	5.42	103	4.38	2k+1k	● BBB	US / Technology	W/Tax, C 2029@100, MWC (25bp), Glob
US595620AT22	USD	3.650	MIDAMERICAN ENERGY CO	15.04.2029	850 MM	93.80	5.15	75	4.42	2k+1k	A	US / Utilities	W/Tax, MBS, C 2029@100, MWC (15bp)
US29278NAG88	USD	5.250	ENERGY TRANSFER LP	15.04.2029	1.5 B	99.43	5.45	106	4.28	2k+1k	BBB-	US / Energy	W/Tax, C 2029@100, MWC (40bp), Glob
5 to 7 years													
US12621EAL74	USD	5.250	CNO FINANCIAL GROUP INC	30.05.2029	500 MM	94.74	6.59	220	4.25	2k+1k	● BBB-	US / Insurance	W/Tax, Dom., C 2029@100, MWC (50bp)
US404119BX69	USD	4.125	HCA INC	15.06.2029	2 B	93.93	5.58	120	4.43	2k+1k	BBB-	US / Healthcare	W/Tax, Dom., C 2029@100, MWC (35bp)
US25389JAU07	USD	3.600	DIGITAL REALTY TRUST LP	01.07.2029	900 MM	91.83	5.51	113	4.53	2k+1k	BBB	US / Real Estate	W/Tax, Dom., C 2029@100, MWC (25bp)
US458140BZ25	USD	4.000	INTEL CORP *	05.08.2029	850 MM	95.10	5.14	76	4.60	2k+1k	● A-	US / Technology	W/Tax, C 2029@100, MWC (20bp), Glob
US037833EN61	USD	3.250	APPLE INC *	08.08.2029	1 B	92.70	4.90	52	4.70	2k+1k	● AA+	US / Technology	W/Tax, C 2029@100, MWC (10bp), Glob
US37940XAB82	USD	3.200	GLOBAL PAYMENTS INC	15.08.2029	1.25 B	89.02	5.72	134	4.69	2k+1k	BBB-	US / Services	W/Tax, C 2029@100, MWC (25bp), Glob
US26884UAF66	USD	3.750	EPR PROPERTIES	15.08.2029	500 MM	87.98	6.58	220	4.60	2k+1k	BBB-	US / Real Estate	W/Tax, C 2029@100, MWC (35bp), Glob
US48203RAM60	USD	3.750	JUNIPER NETWORKS INC	15.08.2029	500 MM	92.20	5.55	117	4.64	2k+1k	● BBB	US / Telecom	W/Tax, C 2029@100, MWC (35bp), Glob
US718172CJ63	USD	3.375	PHILIP MORRIS INTL INC	15.08.2029	750 MM	92.12	5.16	79	4.69	2k+1k	A-	US / Tobacco	W/Tax, C 2029@100, MWC (15bp), Glob
US30231GBE17	USD	2.440	EXXON MOBIL CORPORATION *	16.08.2029	1.25 B	88.90	4.91	53	4.81	2k+1k	AA-	US / Energy	W/Tax, C 2029@100, MWC (12bp), Glob
US718172CW74	USD	5.625	PHILIP MORRIS INTL INC	17.11.2029	1.25 B	101.77	5.31 c	94	4.47	2k+1k	A-	US / Tobacco	W/Tax, C 2029@100, MWC (30bp), Glob
US681936BL34	USD	3.625	OMEGA HLTHCARE INVESTORS	01.10.2029	500 MM	88.30	6.30	194	4.75	2k+1k	● BBB-	US / Real Estate	W/Tax, C 2029@100, MWC (30bp), Glob
US24422EWN56	USD	4.850	JOHN DEERE CAPITAL CORP	11.10.2029	400 MM	99.12	5.10	73	4.70	1k+1k	● A	US / Industrial	W/Tax, Dom.
US458140BH27	USD	2.450	INTEL CORP *	15.11.2029	2 B	87.39	5.16	80	4.97	2k+1k	● A-	US / Technology	W/Tax, C 2029@100, MWC (10bp), Glob
US78409VAP94	USD	2.500	S&P GLOBAL INC	01.12.2029	500 MM	87.83	5.10	74	5.01	2k+1k	● A-	US / Services	W/Tax, C 2029@100, MWC (12bp), Glob
US91324PEQ19	USD	5.300	UNITEDHEALTH GROUP INC	15.02.2030	1.25 B	101.10	5.14 c	78	4.74	2k+1k	● A	US / Healthcare	W/Tax, C 2029@100, MWC (20bp), Glob
US03027XBA72	USD	2.900	AMERICAN TOWER CORP *	15.01.2030	750 MM	87.55	5.55	120	5.05	2k+1k	● BBB-	US / Real Estate	W/Tax, C 2029@100, MWC (20bp), Glob

Yields are annualized.

See last page for abbreviations, explanations and disclaimer.

Isin	Ccy	Cpn	Issuer	Maturity	Amnt Out.	Ask	Yield	D/Swap	Durat.	Pieces ESG	Rating	Cty / Sector	Miscellaneous
US961214EL30	USD	2.650	WESTPAC BANKING CORP	16.01.2030	750 MM	87.66	5.25	89	5.10	2k+1k	AA-	AU / Banks	Global
US693475AZ80	USD	2.550	PNC FINANCIAL SERVICES	22.01.2030	2 B	86.59	5.37	102	5.13	2k+1k	● A-	US / Banks	W/Tax, C 2029@100, Global
US20030NDA63	USD	2.650	COMCAST CORP	01.02.2030	1.6 B	87.72	5.22	87	5.15	2k+1k	● A-	US / Comm.	W/Tax, C 2029@100, MWC (15bp), Glob
US37045XEG79	USD	5.850	GENERAL MOTORS FINL CO **	06.04.2030	1 B	100.75	5.78 c	144	4.92	2k+1k	BBB	US / Auto	W/Tax, C 2030@100, MWC (40bp), Glob
US844741BF49	USD	2.625	SOUTHWEST AIRLINES CO *	10.02.2030	500 MM	85.77	5.62	127	5.16	2k+1k	BBB	US / Transport	W/Tax, C 2029@100, MWC (20bp), Glob
US89236TGU34	USD	2.150	TOYOTA MOTOR CREDIT CORP *	13.02.2030	750 MM	85.59	5.13	78	5.25	2k+1k	● A+	US / Auto	W/Tax, MWC (10bp), Global
US126650DT42	USD	5.125	CVS HEALTH CORP	21.02.2030	1.5 B	98.47	5.51	116	4.88	2k+1k	● BBB	US / Healthcare	W/Tax, C 2029@100, MWC (25bp), Glob
US05348EBG35	USD	2.300	AVALONBAY COMMUNITIES	01.03.2030	700 MM	85.74	5.24	89	5.27	1k+1k	A-	US / Real Estate	W/Tax, C 2029@100, MWC (12bp), Glob
US084664CU37	USD	1.850	BERKSHIRE HATHAWAY FIN *	12.03.2030	500 MM	84.63	4.97	62	5.38	2k+1k	AA	US / Insurance	W/Tax, C 2029@100, MWC (15bp), Glob
US10112RBC79	USD	2.900	BOSTON PROPERTIES LP	15.03.2030	700 MM	84.25	6.24	189	5.19	1k+1k	● BBB	US / Real Estate	W/Tax, C 2029@100, MWC (20bp), Glob
US30231GBK76	USD	3.482	EXXON MOBIL CORPORATION *	19.03.2030	2 B	92.95	4.94	59	5.18	2k+1k	AA-	US / Energy	W/Tax, C 2029@100, MWC (40bp), Glob
US254687FQ40	USD	3.800	WALT DISNEY COMPANY/THE	22.03.2030	1.25 B	93.82	5.09	75	5.14	2k+1k	● A-	US / Comm.	W/Tax, MWC (45bp), Global
US460690BR09	USD	4.750	INTERPUBLIC GROUP COS	30.03.2030	650 MM	96.62	5.50	116	5.03	2k+1k	● BBB	US / Comm.	W/Tax, C 2029@100, MWC (50bp), Glob
US126650DJ69	USD	3.750	CVS HEALTH CORP	01.04.2030	1.5 B	91.52	5.52	118	5.15	2k+1k	● BBB	US / Healthcare	W/Tax, C 2030@100, MWC (45bp), Glob
US369550BM97	USD	3.625	GENERAL DYNAMICS CORP	01.04.2030	1 B	92.86	5.10	76	5.19	2k+1k	A-	US / Industrial	W/Tax, C 2030@100, MWC (45bp), Glob
US02665WEH07	USD	4.600	AMERICAN HONDA FINANCE	17.04.2030	700 MM	97.08	5.24	90	5.11	2k+1k	● A-	US / Auto	W/Tax, MWC (20bp), Global
US918204BC10	USD	2.950	VF CORP	23.04.2030	750 MM	80.54	7.12	278	5.25	2k+1k	BBB-	US / Retail	W/Tax, C 2030@100, MWC (40bp), Glob
US65473PAJ49	USD	3.600	NISOURCE INC	01.05.2030	1 B	91.06	5.44	110	5.25	2k+1k	BBB	US / Utilities	W/Tax, C 2030@100, MWC (45bp), Glob
US09062XAH61	USD	2.250	BIOGEN INC **	01.05.2030	1.5 B	83.75	5.55	121	5.43	2k+1k	● BBB	US / Healthcare	W/Tax, C 2030@100, MWC (25bp), Glob
US009158BC97	USD	2.050	AIR PRODUCTS & CHEMICALS	15.05.2030	900 MM	84.56	5.12	78	5.45	2k+1k	● A	US / Chemical	W/Tax, C 2030@100, MWC (25bp), Glob
US30303M8M79	USD	4.800	META PLATFORMS INC	15.05.2030	1 B	98.66	5.12	79	5.04	2k+1k	AA-	US / Comm.	W/Tax, C 2030@100, MWC (20bp), Glob
USQ8352BAE40	USD	4.375	SCENTRE GROUP TRUST 1/2	28.05.2030	750 MM	94.64	5.50	116	5.12	2k+1k	● A	AU / Real Estate	C 2030@100, MWC (50bp)
US337738BC18	USD	2.650	FISERV INC	01.06.2030	1 B	86.02	5.45	112	5.38	2k+1k	BBB	US / Technology	W/Tax, C 2030@100, MWC (30bp), Glob
US983919AK78	USD	2.375	XILINX INC	01.06.2030	750 MM	86.14	5.12	79	5.44	2k+1k	● A-	US / Technology	W/Tax, C 2030@100, MWC (30bp), Glob
US842400GU17	USD	2.250	SOUTHERN CAL EDISON *	01.06.2030	550 MM	83.98	5.45	112	5.45	1k+1k	A-	US / Utilities	W/Tax, MBS, C 2030@100, MWC (20bp)

Yields are annualized.

See last page for abbreviations, explanations and disclaimer.

Isin	Ccy	Cpn	Issuer	Maturity	Amnt Out.	Ask	Yield	D/Swap	Durat.	Pieces ESG	Rating	Cty / Sector	Miscellaneous
US883203CB58	USD	3.000	TEXTRON INC	01.06.2030	650 MM	87.27	5.57	124	5.32	2k+1k	BBB	US / Industrial	W/Tax, C 2030@100, MWC (40bp), Glob
US89788MAB81	USD	1.950	TRUIST FINANCIAL CORP	05.06.2030	750 MM	82.06	5.53	120	5.50	2k+1k	A- (wl-)	US / Banks	W/Tax, Dom., C 2030@100
XS0113419690	USD	9.750	STATE OF QATAR	15.06.2030	1.4 B	125.50	4.93	60	4.64	10k+1k	AA	QA / Sovereign	GU
US512807AV02	USD	1.900	LAM RESEARCH CORP	15.06.2030	750 MM	83.61	5.12	79	5.56	2k+1k	● A-	US / Technology	W/Tax, C 2030@100, MWC (20bp), Glob
US37045XCY04	USD	3.600	GENERAL MOTORS FINL CO *	21.06.2030	1.1 B	89.17	5.80	147	5.27	2k+1k	BBB	US / Auto	W/Tax, C 2030@100, MWC (45bp), Glob
US806854AJ48	USD	2.650	SCHLUMBERGER INVESTMENT	26.06.2030	1.25 B	87.60	5.09	75	5.46	2k+1k	A	US / Energy	C 2030@100, MWC (30bp), Global
US74834LBB53	USD	2.950	QUEST DIAGNOSTICS INC	30.06.2030	800 MM	87.69	5.40	106	5.41	2k+1k	● BBB	US / Healthcare	W/Tax, C 2030@100, MWC (20bp), Glob
US002824BQ25	USD	1.400	ABBOTT LABORATORIES *	30.06.2030	650 MM	82.03	4.87	54	5.70	2k+1k	● AA-	US / Healthcare	W/Tax, C 2030@100, MWC (15bp), Glob
US22822VAR24	USD	3.300	CROWN CASTLE INC	01.07.2030	750 MM	87.95	5.72	139	5.34	2k+1k	BBB-	US / Real Estate	W/Tax, C 2030@100, MWC (45bp), Glob
US11120VAJ26	USD	4.050	BRIXMOR OPERATING PART	01.07.2030	800 MM	91.84	5.72	139	5.24	2k+1k	● BBB-	US / Real Estate	W/Tax, C 2030@100, MWC (50bp), Glob
US718172DD84	USD	5.500	PHILIP MORRIS INTL INC	07.09.2030	700 MM	100.83	5.41 c	108	5.13	2k+1k	A-	US / Tobacco	W/Tax, C 2030@100, MWC (25bp), Glob
US46124HAD89	USD	1.650	INTUIT INC	15.07.2030	500 MM	82.34	5.07	74	5.69	2k+1k	● A-	US / Technology	W/Tax, C 2030@100, MWC (15bp), Glob
US828807DK02	USD	2.650	SIMON PROPERTY GROUP LP *	15.07.2030	750 MM	86.27	5.35	102	5.50	2k+1k	A-	US / Real Estate	W/Tax, C 2030@100, MWC (30bp), Glob
US91159HJA95	USD	1.375	US BANCORP	22.07.2030	1.25 B	79.43	5.38	105	5.75	1k+1k	A-	US / Banks	W/Tax, C 2030@100, Global
US02079KAD90	USD	1.100	ALPHABET INC **	15.08.2030	2.25 B	80.74	4.73	41	5.89	2k+1k	● AA	US / Comm.	W/Tax, C 2030@100, MWC (10bp), Glob
US037833DY36	USD	1.250	APPLE INC *	20.08.2030	1.25 B	81.04	4.83	51	5.87	2k+1k	● AA+	US / Technology	W/Tax, C 2030@100, MWC (10bp), Glob
US81762PAE25	USD	1.400	SERVICENOW INC	01.09.2030	1.5 B	80.02	5.21	89	5.86	2k+1k	● A-	US / Technology	W/Tax, C 2030@100, MWC (15bp), Glob
US404119CA57	USD	3.500	HCA INC	01.09.2030	2.7 B	89.37	5.59	127	5.48	2k+1k	BBB-	US / Healthcare	W/Tax, Dom., C 2030@100, MWC (50bp), Glob
US055451BD93	USD	5.250	BHP BILLITON FIN USA LTD *	08.09.2030	900 MM	100.20	5.28	96	5.28	2k+1k	A-	AU / Basic Mat.	C 2030@100, MWC (15bp), Global
US171239AG12	USD	1.375	CHUBB INA HOLDINGS INC	15.09.2030	1 B	80.48	5.06	74	5.90	2k+1k	● A-	US / Insurance	W/Tax, C 2030@100, MWC (15bp), Glob
US15089QAX25	USD	6.550	CELANESE US HOLDINGS LLC	15.11.2030	1 B	103.61	5.95 c	162	5.01	2k+1k	BBB-	US / Chemical	W/Tax, Step Rtg, C 2030@100, MWC (40bp), Glob
US29273VAT70	USD	6.400	ENERGY TRANSFER LP	01.12.2030	1 B	104.28	5.67 c	135	5.08	2k+1k	BBB-	US / Energy	W/Tax, C 2030@100, MWC (30bp), Glob
US30231GBN16	USD	2.610	EXXON MOBIL CORPORATION **	15.10.2030	2 B	87.40	4.98	66	5.77	2k+1k	AA-	US / Energy	W/Tax, C 2030@100, MWC (30bp), Glob
US74340XBR17	USD	1.250	PROLOGIS LP	15.10.2030	750 MM	78.76	5.24	92	6.00	2k+1k	● A-	US / Real Estate	W/Tax, C 2030@100, MWC (15bp), Glob
US084664CW92	USD	1.450	BERKSHIRE HATHAWAY FIN *	15.10.2030	750 MM	81.26	4.94	61	5.98	2k+1k	AA	US / Insurance	W/Tax, C 2030@100, MWC (15bp), Glob

Yields are annualized.

See last page for abbreviations, explanations and disclaimer.

Isin	Ccy	Cpn	Issuer	Maturity	Amnt Out.	Ask	Yield	D/Swap	Durat.	Pieces ESG	Rating	Cty / Sector	Miscellaneous
US969457BX79	USD	3.500	WILLIAMS COMPANIES INC	15.11.2030	1 B	89.68	5.47	115	5.58	2k+1k	BBB	US / Energy	W/Tax, C 2030@100, MWC (45bp), Glob
US12503MAC29	USD	1.625	CBOE GLOBAL MARKETS INC	15.12.2030	500 MM	80.65	5.18	86	6.03	2k+1k	● A-	US / Financial	W/Tax, C 2030@100, MWC (12bp), Glob
US37045XDE31	USD	2.350	GENERAL MOTORS FINL CO *	08.01.2031	1 B	81.31	5.85	154	5.91	2k+1k	BBB	US / Auto	W/Tax, C 2030@100, MWC (25bp), Glob
US718286BB24	USD	7.750	REPUBLIC OF PHILIPPINES	14.01.2031	1.7 B	113.38	5.41	110	5.18	100k+1k	● BBB	PH / Sovereign	Global
US20030NDM02	USD	1.950	COMCAST CORP	15.01.2031	1.5 B	81.78	5.28	97	6.04	2k+1k	● A-	US / Comm.	W/Tax, C 2030@100, MWC (20bp), Glob
US75513ECV11	USD	6.000	RTX CORP	15.03.2031	1 B	103.51	5.44 c	113	5.43	2k+1k	BBB+	US / Industrial	W/Tax, C 2031@100, MWC (25bp), Glob
US06406RAR84	USD	1.650	BANK OF NY MELLON CORP	28.01.2031	500 MM	81.13	5.05	74	6.15	1k+1k	● A	US / Banks	W/Tax, Dom., C 2030@100
US126650DX53	USD	5.250	CVS HEALTH CORP	30.01.2031	750 MM	98.77	5.54	123	5.51	2k+1k	● BBB	US / Healthcare	W/Tax, C 2030@100, MWC (25bp), Glob
US681936BM17	USD	3.375	OMEGA HLTHCARE INVESTORS	01.02.2031	700 MM	83.93	6.44	213	5.74	2k+1k	● BBB-	US / Real Estate	W/Tax, C 2030@100, MWC (45bp), Glob
US449276AD68	USD	4.750	IBM INTERNAT CAPITAL *	05.02.2031	500 MM	96.72	5.41	110	5.61	100k+1k	A-	US / Technology	W/Tax, C 2030@100, MWC (15bp), Glob
US63743HFP29	USD	5.000	NATIONAL RURAL UTIL COOP	07.02.2031	450 MM	98.57	5.32	101	5.57	2k+1k	● A-	US / Utilities	W/Tax, C 2030@100, MWC (15bp), Glob
US037833ED89	USD	1.650	APPLE INC *	08.02.2031	2.75 B	81.60	4.94	63	6.19	2k+1k	● AA+	US / Technology	W/Tax, C 2030@100, MWC (10bp), Glob
XS2201851172	USD	3.000	ROMANIA	14.02.2031	1.3 B	82.55	6.29	198	5.86	2k+2k	● BBB-	RO / Sovereign	
US49456BAR24	USD	2.000	KINDER MORGAN INC	15.02.2031	750 MM	80.99	5.46	115	6.10	2k+1k	BBB	US / Energy	W/Tax, C 2030@100, MWC (25bp), Glob
US20030NDN84	USD	1.500	COMCAST CORP	15.02.2031	1.75 B	79.15	5.26	95	6.22	2k+1k	● A-	US / Comm.	W/Tax, C 2030@100, MWC (15bp), Glob
US14448CAL81	USD	2.700	CARRIER GLOBAL CORP	15.02.2031	750 MM	85.20	5.40	109	5.97	2k+1k	● BBB-	US / Industrial	W/Tax, C 2030@100, MWC (30bp), Glob
US17275RBS04	USD	4.950	CISCO SYSTEMS INC *	26.02.2031	2.5 B	99.36	5.13	82	5.65	2k+1k	● A+	US / Telecom	W/Tax, C 2030@100, MWC (10bp), Glob
US03740MAC47	USD	5.300	AON NORTH AMERICA INC *	01.03.2031	650 MM	99.31	5.50	119	5.59	2k+1k	BBB	US / Insurance	W/Tax, C 2031@100, MWC (20bp), Glob
US24422EXN48	USD	4.900	JOHN DEERE CAPITAL CORP	07.03.2031	850 MM	98.77	5.18	87	5.69	1k+1k	● A	US / Industrial	W/Tax, Dom.
US42225UAH77	USD	2.000	HEALTHCARE RLTY HLDGS LP	15.03.2031	800 MM	78.19	6.00	170	6.16	2k+1k	● BBB	US / Real Estate	W/Tax, C 2030@100, MWC (25bp), Glob
US437076CF79	USD	1.375	HOME DEPOT INC	15.03.2031	1.25 B	78.82	5.14	83	6.34	2k+1k	● A	US / Retail	W/Tax, C 2030@100, MWC (10bp), Glob
US969457BY52	USD	2.600	WILLIAMS COMPANIES INC	15.03.2031	1.5 B	83.70	5.56	125	6.06	2k+1k	BBB	US / Energy	W/Tax, C 2030@100, MWC (20bp), Glob
US49271VAU44	USD	5.200	KEURIG DR PEPPER INC	15.03.2031	500 MM	98.79	5.49	118	5.64	2k+1k	BBB	US / Food	W/Tax, C 2031@100, MWC (15bp), Glob
US25278XAR08	USD	3.125	DIAMONDBACK ENERGY INC	24.03.2031	788.6 MM	87.36	5.41	111	6.00	2k+1k	BBB- (wl+)	US / Energy	W/Tax, C 2030@100, MWC (25bp), Glob
US68389XCE31	USD	2.875	ORACLE CORP	25.03.2031	3.25 B	85.42	5.52	121	6.04	2k+1k	● BBB	US / Technology	W/Tax, C 2030@100, MWC (20bp), Glob

Yields are annualized.

See last page for abbreviations, explanations and disclaimer.

Isin	Ccy	Cpn	Issuer	Maturity	Amnt Out.	Ask	Yield	D/Swap	Durat.	Pieces ESG	Rating	Cty / Sector	Miscellaneous
US037735CZ84	USD	2.700	APPALACHIAN POWER CO	01.04.2031	500 MM	83.16	5.77	146	6.07	2k+1k	BBB+	US / Utilities	W/Tax, C 2031@100, MWC (20bp), Glob
US22822VAV19	USD	2.100	CROWN CASTLE INC	01.04.2031	1 B	80.07	5.70	140	6.20	2k+1k	BBB-	US / Real Estate	W/Tax, C 2031@100, MWC (15bp), Glob
US548661EA10	USD	2.625	LOWE'S COS INC	01.04.2031	1.5 B	84.67	5.38	107	6.11	2k+1k	● BBB+	US / Retail	W/Tax, C 2031@100, MWC (15bp), Glob
US404119CT49	USD	5.450	HCA INC	01.04.2031	1 B	99.15	5.68	137	5.61	2k+1k	BBB-	US / Healthcare	W/Tax, C 2031@100, MWC (20bp), Glob
US03027XBM11	USD	2.700	AMERICAN TOWER CORP *	15.04.2031	700 MM	83.75	5.63	133	6.12	2k+1k	● BBB-	US / Real Estate	W/Tax, C 2031@100, MWC (20bp), Glob
USQ82780AF65	USD	3.649	SANTOS FINANCE LTD	29.04.2031	1 B	85.82	6.28	198	5.95	2k+1k	BBB-	AU / Energy	C 2031@100, MWC (35bp)
US74460WAE75	USD	2.300	PUBLIC STORAGE OP CO	01.05.2031	650 MM	82.74	5.36	106	6.26	2k+1k	A	US / Real Estate	W/Tax, C 2031@100, MWC (12bp), Glob
7 to 10 years													
USQ66345AB78	USD	4.700	NEWCASTLE COAL INFRASTRU	12.05.2031	448.5 MM	90.05	6.59	229	5.65	2k+1k	BBB+	AU / Basic Mat.	Secured, C 2031@100, MWC (50bp)
US961214ET65	USD	2.150	WESTPAC BANKING CORP	03.06.2031	1 B	82.45	5.21	91	6.30	2k+1k	AA-	AU / Banks	Global
US37045XDL73	USD	2.700	GENERAL MOTORS FINL CO *	10.06.2031	1 B	81.94	5.93	163	6.15	2k+1k	BBB	US / Auto	W/Tax, C 2031@100, MWC (20bp), Glob
US92343EAM49	USD	2.700	VERISIGN INC	15.06.2031	750 MM	82.82	5.75	145	6.18	2k+1k	BBB-	US / Comm.	W/Tax, C 2031@100, MWC (20bp), Glob
US40434LAJ44	USD	2.650	HP INC *	17.06.2031	997.0 MM	83.23	5.61	131	6.20	2k+1k	● BBB	US / Technology	W/Tax, C 2031@100, MWC (20bp), Glob
US404119CC14	USD	2.375	HCA INC	15.07.2031	850 MM	81.05	5.69	140	6.34	2k+1k	BBB-	US / Healthcare	W/Tax, C 2031@100, MWC (15bp), Glob
US037833EJ59	USD	1.700	APPLE INC *	05.08.2031	1 B	80.68	4.96	66	6.59	2k+1k	● AA+	US / Technology	W/Tax, C 2031@100, MWC (10bp), Glob
US458140BU38	USD	2.000	INTEL CORP *	12.08.2031	1.25 B	80.20	5.39	110	6.51	2k+1k	● A-	US / Technology	W/Tax, C 2031@100, MWC (10bp), Glob
US03027XBS80	USD	2.300	AMERICAN TOWER CORP *	15.09.2031	700 MM	80.65	5.62	132	6.51	2k+1k	● BBB-	US / Real Estate	W/Tax, C 2031@100, MWC (15bp), Glob
US2027A1KF30	USD	1.875	COMMONWEALTH BANK AUST *	15.09.2031	800 MM	79.75	5.30	100	6.63	2k+1k	● AA-	AU / Banks	
US78016EYH43	USD	2.300	ROYAL BANK OF CANADA *	03.11.2031	1.5 B	82.13	5.28	99	6.66	2k+1k	● A	CA / Banks	W/Tax, MWC (15bp), Global
US04010LBC63	USD	3.200	ARES CAPITAL CORP	15.11.2031	700 MM	82.51	6.23	194	6.33	2k+1k	BBB-	US / Financial	W/Tax, Dom., C 2031@100, MWC (30bp)
US37045XDS27	USD	3.100	GENERAL MOTORS FINL CO *	12.01.2032	1.25 B	83.16	5.94	165	6.53	2k+1k	BBB	US / Auto	W/Tax, C 2031@100, MWC (25bp), Glob
US86964WAK80	USD	3.125	SUZANO AUSTRIA GMBH	15.01.2032	1 B	81.16	6.35	206	6.49	1k+1k	● BBB-	BR / Basic Mat.	C 2031@100, MWC (30bp), Global
US828807DQ71	USD	2.250	SIMON PROPERTY GROUP LP **	15.01.2032	700 MM	80.25	5.50	121	6.77	2k+1k	A-	US / Real Estate	W/Tax, C 2031@100, MWC (15bp), Glob
US110122DU92	USD	2.950	BRISTOL-MYERS SQUIBB CO	15.03.2032	1.75 B	85.42	5.31	102	6.77	2k+1k	● A	US / Healthcare	W/Tax, C 2031@100, MWC (15bp), Glob
US03027XBW92	USD	4.050	AMERICAN TOWER CORP *	15.03.2032	650 MM	90.32	5.67	139	6.51	2k+1k	● BBB-	US / Real Estate	W/Tax, C 2031@100, MWC (30bp), Glob

Yields are annualized.

See last page for abbreviations, explanations and disclaimer.

Isin	Ccy	Cpn	Issuer	Maturity	Amnt Out.	Ask	Yield	D/Swap	Durat.	Pieces ESG	Rating	Cty / Sector	Miscellaneous
US852060AT99	USD	8.750	SPRINT CAPITAL CORP	15.03.2032	1.998 B	118.94	5.80	152	5.80	1k+1k	BBB-	US / Telecom	W/Tax, MWC (45bp), Global
US15089QAP90	USD	6.379	CELANESE US HOLDINGS LLC	15.07.2032	1 B	102.24	6.11 c	183	6.06	2k+1k	BBB-	US / Chemical	W/Tax, Step Rtg, C 2032@100, MWC (50bp), Global
US78016FZQ08	USD	3.875	ROYAL BANK OF CANADA *	04.05.2032	1 B	91.28	5.29	101	6.69	2k+1k	● A	CA / Banks	MWC (20bp), Global
USU38265AA92	USD	4.625	GOODMAN US FIN FIVE LLC	04.05.2032	500 MM	90.26	6.28	201	6.48	2k+1k	BBB+	AU / Real Estate	C 2032@100, MWC (30bp)
US91324PEJ75	USD	4.200	UNITEDHEALTH GROUP INC	15.05.2032	1.5 B	93.16	5.32	105	6.52	2k+1k	● A	US / Healthcare	W/Tax, C 2032@100, MWC (20bp), Glob
US756109BP80	USD	5.625	REALTY INCOME CORP	13.10.2032	750 MM	100.50	5.62 c	135	6.62	2k+1k	A-	US / Real Estate	W/Tax, C 2032@100, MWC (30bp), Glob
US459200KU40	USD	4.400	IBM CORP *	27.07.2032	750 MM	93.99	5.38	111	6.67	100k+1k	● A-	US / Technology	W/Tax, C 2032@100, MWC (25bp), Glob
US458140CA64	USD	4.150	INTEL CORP *	05.08.2032	1.25 B	92.33	5.38	111	6.74	2k+1k	● A-	US / Technology	W/Tax, C 2032@100, MWC (25bp), Glob
US68389XCJ28	USD	6.250	ORACLE CORP	09.11.2032	2.25 B	104.66	5.62 c	134	6.25	2k+1k	● BBB	US / Technology	W/Tax, C 2032@100, MWC (35bp), Glob
US30303M8H84	USD	3.850	META PLATFORMS INC	15.08.2032	3.0 B	91.94	5.12	84	6.85	2k+1k	AA-	US / Comm.	W/Tax, C 2032@100, MWC (20bp), Glob
US20030NEB38	USD	5.500	COMCAST CORP	15.11.2032	1 B	101.52	5.34 c	107	6.42	2k+1k	● A-	US / Comm.	W/Tax, C 2032@100, MWC (25bp), Glob
US718172CX57	USD	5.750	PHILIP MORRIS INTL INC	17.11.2032	1.5 B	101.81	5.55 c	128	6.36	2k+1k	A-	US / Tobacco	W/Tax, C 2032@100, MWC (30bp), Glob
US91324PER91	USD	5.350	UNITEDHEALTH GROUP INC	15.02.2033	2 B	100.79	5.30 c	103	6.70	2k+1k	● A	US / Healthcare	W/Tax, C 2032@100, MWC (20bp), Glob
US459200BB69	USD	5.875	IBM CORP *	29.11.2032	600 MM	104.19	5.33	106	6.54	1k+1k	● A-	US / Technology	W/Tax, MWC (15bp), Global
US715638DP43	USD	1.862	REPUBLIC OF PERU	01.12.2032	1 B	74.39	5.76	149	7.53	1k+1k	● BBB-	PE / Sovereign	C 2032@100, MWC (15bp), Global
US210385AC48	USD	5.800	CONSTELLATION EN GEN LLC	01.03.2033	600 MM	100.77	5.77 c	150	6.61	2k+1k	BBB+	US / Utilities	W/Tax, C 2032@100, MWC (30bp), Glob
US42250PAE34	USD	5.250	HEALTHPEAK OP LLC	15.12.2032	750 MM	97.22	5.74	147	6.67	2k+1k	● BBB+	US / Real Estate	W/Tax, C 2032@100, MWC (30bp), Glob
US59156RAE80	USD	6.500	METLIFE INC *	15.12.2032	600 MM	108.44	5.34	107	6.47	1k+1k	● A-	US / Insurance	W/Tax, Dom., MWC (20bp)
US958667AE72	USD	6.150	WESTERN MIDSTREAM OPERAT	01.04.2033	750 MM	100.97	6.09 c	183	6.60	2k+1k	BBB-	US / Energy	W/Tax, C 2033@100, MWC (40bp), Glob
US20030NBH35	USD	4.250	COMCAST CORP	15.01.2033	1.7 B	92.46	5.42	115	7.00	2k+1k	● A-	US / Comm.	W/Tax, MWC (20bp), Global
XS2571923007	USD	7.125	ROMANIA	17.01.2033	1.6 B	104.22	6.59	232	6.33	2k+2k	● BBB-	RO / Sovereign	
US742718GA10	USD	4.050	PROCTER & GAMBLE CO/THE **	26.01.2033	850 MM	94.72	4.85	59	7.13	2k+1k	● AA-	US / Retail	W/Tax, MWC (10bp), Global
US29379VCD38	USD	5.350	ENTERPRISE PRODUCTS OPER	31.01.2033	1 B	100.06	5.41	114	6.80	1k+1k	● A-	US / Energy	W/Tax, C 2032@100, MWC (25bp), Glob
US78016FZX58	USD	5.000	ROYAL BANK OF CANADA *	01.02.2033	1.7 B	97.45	5.44	117	6.87	2k+1k	● A	CA / Banks	MWC (25bp), Global
US015271AV11	USD	1.875	ALEXANDRIA REAL ESTATE E	01.02.2033	1 B	74.40	5.70	144	7.69	2k+1k	● BBB+	US / Real Estate	W/Tax, C 2032@100, MWC (20bp), Glob

Yields are annualized.

See last page for abbreviations, explanations and disclaimer.

Isin	Ccy	Cpn	Issuer	Maturity	Amnt Out.	Ask	Yield	D/Swap	Durat.	Pieces ESG	Rating	Cty / Sector	Miscellaneous
US459200KY61	USD	4.750	IBM CORP *	06.02.2033	750 MM	96.08	5.39	112	6.95	100k+1k	● A-	US / Technology	W/Tax, C 2032@100, MWC (20bp), Glob
US68389XCP87	USD	4.900	ORACLE CORP	06.02.2033	1.5 B	95.83	5.58	132	6.89	2k+1k	● BBB	US / Technology	W/Tax, C 2032@100, MWC (25bp), Glob
US718172DB29	USD	5.375	PHILIP MORRIS INTL INC	15.02.2033	2.25 B	99.03	5.59	133	6.82	2k+1k	A-	US / Tobacco	W/Tax, C 2032@100, MWC (30bp), Glob
US055451BA54	USD	4.900	BHP BILLITON FIN USA LTD *	28.02.2033	750 MM	97.00	5.40	114	6.97	2k+1k	A-	AU / Basic Mat.	C 2032@100, MWC (20bp), Global
US025537AX91	USD	5.625	AMERICAN ELECTRIC POWER	01.03.2033	850 MM	98.87	5.87	161	6.78	2k+1k	BBB	US / Utilities	W/Tax, C 2032@100, MWC (30bp), Glob
US009158BF29	USD	4.800	AIR PRODUCTS & CHEMICALS	03.03.2033	600 MM	97.14	5.28	101	7.01	2k+1k	● A	US / Chemical	W/Tax, C 2032@100, MWC (15bp), Glob
US828807DU83	USD	5.500	SIMON PROPERTY GROUP LP *	08.03.2033	650 MM	99.66	5.62	136	6.85	2k+1k	A-	US / Real Estate	W/Tax, C 2032@100, MWC (25bp), Glob
US76720AAN63	USD	5.000	RIO TINTO FIN USA PLC **	09.03.2033	650 MM	98.31	5.31	104	6.98	2k+1k	A	AU / Basic Mat.	C 2032@100, MWC (20bp), Global
US26442UAQ76	USD	5.250	DUKE ENERGY PROGRESS LLC	15.03.2033	500 MM	99.30	5.42	116	6.94	2k+1k	A	US / Utilities	W/Tax, MBS, C 2032@100, MWC (20bp)
US20030NAC56	USD	7.050	COMCAST CORP	15.03.2033	750 MM	111.28	5.50	124	6.61	1k+1k	● A-	US / Comm.	W/Tax, Dom., MWC (40bp)
US694308KM84	USD	6.400	PACIFIC GAS & ELECTRIC	15.06.2033	1.15 B	103.09	6.03 c	177	6.56	2k+1k	BBB	US / Utilities	W/Tax, MBS, C 2033@100, MWC (45bp)
US020002BK68	USD	5.250	ALLSTATE CORP	30.03.2033	750 MM	97.65	5.67	140	6.95	2k+1k	● BBB+	US / Insurance	W/Tax, C 2032@100, MWC (30bp), Glob
US23338VAS51	USD	5.200	DTE ELECTRIC CO	01.04.2033	600 MM	99.37	5.36	109	7.00	2k+1k	● A	US / Utilities	W/Tax, MBS, C 2033@100, MWC (20bp)
USQ6951UAA99	USD	6.125	NORTHERN STAR RESOU	11.04.2033	600 MM	98.55	6.44	218	6.74	2k+1k	● BBB-	AU / Basic Mat.	C 2033@100, MWC (45bp)
US91324PEV04	USD	4.500	UNITEDHEALTH GROUP INC	15.04.2033	1.5 B	94.69	5.32	106	7.19	2k+1k	● A	US / Healthcare	W/Tax, C 2033@100, MWC (20bp), Glob
US78016HZQ63	USD	5.000	ROYAL BANK OF CANADA *	02.05.2033	900 MM	97.47	5.43	117	7.12	2k+1k	● A	CA / Banks	MWC (25bp), Global
US970648AM30	USD	5.350	WILLIS NORTH AMERICA INC	15.05.2033	750 MM	97.13	5.85	158	6.85	2k+1k	BBB-	US / Insurance	W/Tax, C 2033@100, MWC (30bp), Glob
US341081GQ46	USD	4.800	FLORIDA POWER & LIGHT CO	15.05.2033	750 MM	96.37	5.38	112	7.03	2k+1k	● A+	US / Utilities	W/Tax, MBS, C 2033@100, MWC (20bp)
US404119CQ00	USD	5.500	HCA INC	01.06.2033	1.25 B	98.32	5.82	156	6.87	2k+1k	BBB-	US / Healthcare	W/Tax, C 2033@100, MWC (30bp), Glob
US00108WAR16	USD	5.400	AEP TEXAS INC	01.06.2033	450 MM	97.28	5.87	161	6.88	2k+1k	BBB	US / Utilities	W/Tax, C 2033@100, MWC (30bp), Glob
US842434CZ32	USD	5.200	SOUTHERN CALIF GAS CO	01.06.2033	500 MM	98.38	5.50	124	6.97	2k+1k	● A+	US / Utilities	W/Tax, MBS, C 2033@100, MWC (25bp)
US682680BL63	USD	6.050	ONEOK INC	01.09.2033	1.5 B	102.15	5.82 c	156	6.86	2k+1k	● BBB	US / Energy	W/Tax, C 2033@100, MWC (30bp), Glob
US126117AX87	USD	5.500	CNA FINANCIAL CORP	15.06.2033	500 MM	99.02	5.72	146	6.91	2k+1k	● BBB	US / Insurance	W/Tax, C 2033@100, MWC (30bp), Glob
US759351AR05	USD	6.000	REINSURANCE GRP OF AMER	15.09.2033	400 MM	101.46	5.88 c	162	7.02	2k+1k	● BBB+	US / Insurance	W/Tax, C 2033@100, MWC (40bp), Glob
USQ82780AG49	USD	6.875	SANTOS FINANCE LTD	19.09.2033	850 MM	103.68	6.44 c	218	6.69	2k+1k	BBB-	AU / Energy	C 2033@100, MWC (40bp)

Yields are annualized.

See last page for abbreviations, explanations and disclaimer.

Isin	Ccy	Cpn	Issuer	Maturity	Amnt Out.	Ask	Yield	D/Swap	Durat.	Pieces ESG	Rating	Cty / Sector	Miscellaneous
US237194AN56	USD	6.300	DARDEN RESTAURANTS INC	10.10.2033	500 MM	102.19	6.08 c	181	6.89	2k+1k	BBB	US / Retail	W/Tax, C 2033@100, MWC (25bp), Glob
US35137LAN55	USD	6.500	FOX CORP *	13.10.2033	1.25 B	103.75	6.05 c	179	6.86	2k+1k	BBB	US / Comm.	W/Tax, C 2033@100, MWC (30bp), Glob
US756109BT03	USD	4.900	REALTY INCOME CORP	15.07.2033	600 MM	94.96	5.69	143	7.13	2k+1k	A-	US / Real Estate	W/Tax, C 2033@100, MWC (30bp), Glob
US502431AQ20	USD	5.400	L3HARRIS TECH INC	31.07.2033	1.5 B	98.44	5.70	144	7.06	2k+1k	BBB	US / Industrial	W/Tax, C 2033@100, MWC (25bp), Glob
US816851BR98	USD	5.500	SEMPRA	01.08.2033	700 MM	98.01	5.86	160	7.03	2k+1k	● BBB	US / Utilities	W/Tax, C 2033@100, MWC (30bp), Glob
US372460AD76	USD	6.875	GENUINE PARTS CO	01.11.2033	375 MM	108.51	5.76 c	150	6.88	2k+1k	BBB	US / Auto	W/Tax, C 2033@100, MWC (35bp), Glob
US494550AQ90	USD	7.300	KINDER MORGAN ENER PART	15.08.2033	500 MM	110.46	5.91	165	6.72	1k+1k	BBB	US / Energy	W/Tax, MWC (30bp), Global
US832696AX63	USD	6.200	JM SMUCKER CO	15.11.2033	1 B	104.55	5.64 c	138	6.82	2k+1k	● BBB	US / Food	W/Tax, C 2033@100, MWC (25bp), Glob
US29366WAD83	USD	5.000	ENTERGY MISSISSIPPI LLC	01.09.2033	300 MM	96.19	5.60	134	7.24	1k+1k	A	US / Utilities	W/Tax, MBS, C 2033@100, MWC (25bp)
US29273VAU44	USD	6.550	ENERGY TRANSFER LP	01.12.2033	1.5 B	105.13	5.91 c	165	6.78	2k+1k	BBB-	US / Energy	W/Tax, C 2033@100, MWC (30bp), Glob
US78355HKY44	USD	6.600	RYDER SYSTEM INC	01.12.2033	600 MM	105.98	5.84 c	158	6.75	2k+1k	● BBB	US / Transport	W/Tax, C 2033@100, MWC (30bp), Glob
US695156AX75	USD	5.700	PACKAGING CORP OF AMERIC	01.12.2033	400 MM	100.72	5.68 c	142	6.98	2k+1k	● BBB	US / Industrial	W/Tax, C 2033@100, MWC (20bp), Glob
US055451BE76	USD	5.250	BHP BILLITON FIN USA LTD *	08.09.2033	1.5 B	98.81	5.49	123	7.22	2k+1k	A-	AU / Basic Mat.	C 2033@100, MWC (20bp), Global
US10373QBV14	USD	4.893	BP CAP MARKETS AMERICA *	11.09.2033	1.5 B	97.11	5.36	110	7.32	1k+1k	A-	US / Energy	W/Tax, C 2033@100, MWC (25bp), Glob
US731011AV42	USD	4.875	REPUBLIC OF POLAND	04.10.2033	2.5 B	96.10	5.48	122	7.37	1k+1k	● A-	PL / Sovereign	C 2033@100, Global
US10112RBH66	USD	6.500	BOSTON PROPERTIES LP	15.01.2034	750 MM	101.01	6.46 c	220	6.85	1k+1k	● BBB	US / Real Estate	W/Tax, C 2033@100, MWC (50bp), Glob
US828807DW40	USD	6.250	SIMON PROPERTY GROUP LP *	15.01.2034	500 MM	104.43	5.72 c	146	6.91	2k+1k	A-	US / Real Estate	W/Tax, C 2033@100, MWC (30bp), Glob
US210385AD21	USD	6.125	CONSTELLATION EN GEN LLC	15.01.2034	500 MM	103.44	5.73 c	147	7.00	2k+1k	BBB+	US / Utilities	W/Tax, C 2033@100, MWC (25bp), Glob
US87264ADC62	USD	5.750	T-MOBILE USA INC	15.01.2034	1 B	101.78	5.58 c	132	7.10	2k+1k	BBB	US / Telecom	W/Tax, C 2033@100, MWC (25bp), Glob
US75513ECW93	USD	6.100	RTX CORP	15.03.2034	1.5 B	104.37	5.58 c	133	7.20	2k+1k	BBB+	US / Industrial	W/Tax, C 2033@100, MWC (25bp), Glob
US87612GAF81	USD	6.500	TARGA RESOURCES CORP	30.03.2034	1 B	105.42	5.84 c	159	7.12	2k+1k	BBB-	US / Energy	W/Tax, C 2033@100, MWC (30bp), Glob
US37045XEP78	USD	6.100	GENERAL MOTORS FINL CO **	07.01.2034	1.5 B	100.31	6.15	189	7.05	2k+1k	BBB	US / Auto	W/Tax, C 2033@100, MWC (30bp), Glob
US02665WEZ05	USD	4.900	AMERICAN HONDA FINANCE	10.01.2034	750 MM	96.27	5.47	121	7.45	2k+1k	● A-	US / Auto	W/Tax, MWC (15bp), Global
US715638DU38	USD	3.000	REPUBLIC OF PERU	15.01.2034	2.25 B	80.00	5.80	154	7.96	1k+1k	● BBB-	PE / Sovereign	C 2033@100, MWC (25bp), Global
US742718GG89	USD	4.550	PROCTER & GAMBLE CO/THE *	29.01.2034	750 MM	96.88	5.02	76	7.64	2k+1k	● AA-	US / Retail	W/Tax, MWC (10bp), Global

Yields are annualized.

See last page for abbreviations, explanations and disclaimer.

Isin	Ccy	Cpn	Issuer	Maturity	Amnt Out.	Ask	Yield	D/Swap	Durat.	Pieces ESG	Rating	Cty / Sector	Miscellaneous
XS2756521303	USD	6.375	ROMANIA	30.01.2034	2 B	98.60	6.68	242	7.01	2k+2k	● BBB-	RO / Sovereign	
US883556DB50	USD	5.200	THERMO FISHER SCIENTIFIC	31.01.2034	500 MM	99.54	5.33	107	7.39	2k+1k	● A-	US / Healthcare	W/Tax, C 2033@100, MWC (15bp), Glob
US482480AP59	USD	4.700	KLA CORP	01.02.2034	500 MM	96.17	5.27	102	7.57	2k+1k	● A-	US / Technology	W/Tax, C 2033@100, MWC (15bp), Glob
US494553AE00	USD	5.400	KINDER MORGAN INC	01.02.2034	1 B	97.53	5.82	156	7.34	2k+1k	BBB	US / Energy	W/Tax, C 2033@100, MWC (25bp), Glob
US06418JAC53	USD	5.650	BANK OF NOVA SCOTIA *	01.02.2034	850 MM	100.88	5.61	135	7.23	2k+1k	● A-	CA / Banks	MWC (25bp), Global
US449276AE42	USD	4.900	IBM INTERNAT CAPITAL *	05.02.2034	1 B	95.63	5.56	130	7.50	100k+1k	A-	US / Technology	W/Tax, C 2033@100, MWC (15bp), Glob
US29736RAV24	USD	5.000	ESTEE LAUDER CO INC	14.02.2034	650 MM	96.91	5.48	123	7.51	2k+1k	● A	US / Retail	W/Tax, C 2033@100, MWC (15bp), Glob
US775109DF56	USD	5.300	ROGERS COMMUNICATIONS IN	15.02.2034	1.25 B	97.04	5.78	152	7.40	2k+1k	● BBB-	CA / Telecom	C 2033@100, MWC (20bp), Global
US695114DD77	USD	5.450	PACIFICORP	15.02.2034	1.1 B	97.12	5.92	167	7.31	2k+1k	A	US / Utilities	W/Tax, MBS, C 2033@100, MWC (25bp)
US756109CG72	USD	5.125	REALTY INCOME CORP	15.02.2034	800 MM	96.07	5.73	148	7.42	2k+1k	A-	US / Real Estate	W/Tax, C 2033@100, MWC (20bp), Glob
US94106LBW81	USD	4.875	WASTE MANAGEMENT INC	15.02.2034	1.25 B	97.39	5.29	103	7.56	2k+1k	● A-	US / Industrial	W/Tax, C 2033@100, MWC (20bp), Glob
US539830CA58	USD	4.750	LOCKHEED MARTIN CORP *	15.02.2034	850 MM	96.68	5.25	100	7.60	2k+1k	A-	US / Industrial	W/Tax, C 2033@100, MWC (20bp), Glob
US00206RMT67	USD	5.400	AT&T INC *	15.02.2034	2.75 B	99.01	5.61	135	7.40	2k+1k	● BBB	US / Telecom	W/Tax, C 2033@100, MWC (30bp), Glob
US277432AY69	USD	5.625	EASTMAN CHEMICAL CO	20.02.2034	750 MM	98.57	5.90	165	7.33	2k+1k	BBB	US / Chemical	W/Tax, C 2033@100, MWC (25bp), Glob
US231021AW65	USD	5.150	CUMMINS INC	20.02.2034	750 MM	99.30	5.31	105	7.51	2k+1k	● A	US / Auto	W/Tax, C 2033@100, MWC (15bp), Glob
US458140CL20	USD	5.150	INTEL CORP *	21.02.2034	900 MM	97.33	5.58	133	7.48	2k+1k	● A-	US / Technology	W/Tax, C 2033@100, MWC (15bp), Glob
US23338VAV80	USD	5.200	DTE ELECTRIC CO	01.03.2034	500 MM	98.21	5.51	126	7.50	2k+1k	● A	US / Utilities	W/Tax, MBS, C 2033@100, MWC (15bp)
US50249AAM53	USD	5.500	LYB INT FINANCE III	01.03.2034	750 MM	98.63	5.76	151	7.39	2k+1k	BBB	US / Chemical	W/Tax, C 2033@100, MWC (20bp), Glob
US29364WBM91	USD	5.350	ENTERGY LOUISIANA LLC	15.03.2034	500 MM	98.20	5.67	141	7.48	1k+1k	A	US / Utilities	W/Tax, MBS, C 2033@100, MWC (20bp)
US00287YDU01	USD	5.050	ABBVIE INC *	15.03.2034	3 B	98.53	5.31	106	7.59	2k+1k	● A-	US / Healthcare	W/Tax, C 2033@100, MWC (12bp), Glob
US571748BW16	USD	5.150	MARSH & MCLENNAN COS INC	15.03.2034	500 MM	98.71	5.39	113	7.54	2k+1k	● A-	US / Insurance	W/Tax, C 2033@100, MWC (15bp), Glob
US88339WAC01	USD	5.150	WILLIAMS COMPANIES INC	15.03.2034	1 B	96.52	5.69	143	7.46	2k+1k	BBB	US / Energy	W/Tax, C 2033@100, MWC (20bp), Glob
US59523UAV98	USD	5.000	MID-AMERICA APARTMENTS	15.03.2034	350 MM	95.70	5.65	139	7.51	2k+1k	A-	US / Real Estate	W/Tax, C 2033@100, MWC (20bp), Glob
US00115AAR05	USD	5.150	AEP TRANSMISSION CO LLC	01.04.2034	450 MM	97.40	5.57	131	7.55	2k+1k	BBB+	US / Utilities	W/Tax, C 2034@100, MWC (20bp), Glob
USG2584CAG18	USD	5.106	CSL FINANCE PLC	03.04.2034	500 MM	97.29	5.54	128	7.61	2k+1k	● A-	AU / Healthcare	C 2034@100, MWC (15bp)

Yields are annualized.

See last page for abbreviations, explanations and disclaimer.

Isin	Ccy	Cpn	Issuer	Maturity	Amnt Out.	Ask	Yield	D/Swap	Durat.	Pieces ESG	Rating	Cty / Sector	Miscellaneous
US37045XEV47	USD	5.950	GENERAL MOTORS FINL CO *	04.04.2034	1.25 B	99.11	6.16	191	7.34	2k+1k	BBB	US / Auto	W/Tax, C 2034@100, MWC (25bp), Glob
US10373QBW96	USD	4.989	BP CAP MARKETS AMERICA *	10.04.2034	1 B	97.76	5.35	109	7.59	1k+1k	A-	US / Energy	W/Tax, C 2034@100, MWC (15bp), Glob
US24703DBN03	USD	5.400	DELL INT LLC / EMC CORP *	15.04.2034	1 B	97.83	5.77	151	7.52	2k+1k	BBB	US / Technology	W/Tax, C 2034@100, MWC (20bp), Glob
> 10 years													
XS2485249523	USD	6.000	ROMANIA	25.05.2034	1.01 B	96.50	6.58	233	7.19	2k+2k	● BBB-	RO / Sovereign	
US842400HZ94	USD	5.200	SOUTHERN CAL EDISON *	01.06.2034	900 MM	96.34	5.76	151	7.56	1k+1k	A-	US / Utilities	W/Tax, MBS, C 2034@100, MWC (20bp)
US096630AK44	USD	5.625	BOARDWALK PIPELINES LP	01.08.2034	600 MM	97.41	6.05	180	7.55	2k+1k	● BBB-	US / Energy	W/Tax, C 2034@100, MWC (25bp), Glob
US731011AY80	USD	5.125	REPUBLIC OF POLAND	18.09.2034	3 B	96.92	5.59	134	7.85	1k+1k	● A-	PL / Sovereign	C 2034@100, Global
US91086QAS75	USD	6.750	UNITED MEXICAN STATES	27.09.2034	1.7 B	104.75	6.22	196	7.41	1k+1k	● BBB	MX / Sovereign	Global
USQ04578AE25	USD	5.000	APA INFRASTRUCTURE LTD	23.03.2035	300 MM	91.43	6.18	193	8.08	2k+1k	BBB	AU / Utilities	C 2034@100, MWC (40bp)
US20030NAF87	USD	5.650	COMCAST CORP	15.06.2035	750 MM	101.09	5.59	134	8.00	1k+1k	● A-	US / Comm.	W/Tax, Dom., MWC (25bp)
US20030NAK72	USD	6.500	COMCAST CORP	15.11.2035	623.5 MM	108.04	5.62	137	7.95	1k+1k	● A-	US / Comm.	W/Tax, Dom., MWC (25bp)
US472319AC60	USD	6.250	JEFFERIES FIN GROUP INC	15.01.2036	500 MM	101.03	6.22	197	8.07	5k+1k	● BBB	US / Financial	W/Tax, Dom., MWC (25bp)
US478160BU72	USD	3.550	JOHNSON & JOHNSON *	01.03.2036	1 B	86.48	5.15	90	9.24	2k+1k	● AAA	US / Healthcare	W/Tax, C 2035@100, MWC (15bp), Glob
US594918BS26	USD	3.450	MICROSOFT CORP *	08.08.2036	1.7 B	86.29	5.02	77	9.55	2k+1k	● AAA	US / Technology	W/Tax, C 2036@100, MWC (20bp), Glob
XS0272949016	USD	6.500	ABU DHABI NATIONAL ENERG	27.10.2036	912.5 MM	110.13	5.45	120	8.67	100k+1k	● AA-	AE / Utilities	
US91911TAH68	USD	6.875	VALE OVERSEAS LIMITED	21.11.2036	1.3 B	104.00	6.51	226	8.14	2k+1k	BBB-	BR / Basic Mat.	MWC (35bp), Global
US594918BZ68	USD	4.100	MICROSOFT CORP *	06.02.2037	851.4 MM	92.61	4.94	69	9.57	2k+1k	● AAA	US / Technology	W/Tax, C 2036@100, MWC (15bp), Glob
US478160CF96	USD	3.625	JOHNSON & JOHNSON *	03.03.2037	1.5 B	86.23	5.17	92	9.79	2k+1k	● AAA	US / Healthcare	W/Tax, C 2036@100, MWC (10bp), Glob
XS0308427581	USD	6.850	DP WORLD LTD UAE *	02.07.2037	1.75 B	106.07	6.26	201	8.53	100k+10k	● BBB	AE / Services	
US931142CK74	USD	6.500	WALMART INC	15.08.2037	1.0 B	113.08	5.19	94	8.99	2k+1k	AA	US / Retail	W/Tax, Global
US68389XBP96	USD	3.800	ORACLE CORP	15.11.2037	1.75 B	81.24	5.91	166	9.80	2k+1k	● BBB	US / Technology	W/Tax, C 2037@100, MWC (20bp), Glob
US20030NCJ81	USD	3.900	COMCAST CORP	01.03.2038	1.2 B	84.17	5.63	138	10.10	2k+1k	● A-	US / Comm.	W/Tax, C 2037@100, MWC (15bp), Glob
US126650CY46	USD	4.780	CVS HEALTH CORP	25.03.2038	5 B	88.49	6.10	185	9.66	2k+1k	● BBB	US / Healthcare	W/Tax, C 2037@100, MWC (30bp), Glob
US24702RAF82	USD	6.500	DELL INC *	15.04.2038	387.8 MM	105.50	6.00	175	9.17	2k+1k	BBB-	US / Technology	W/Tax, MWC (35bp), Global

Yields are annualized.

See last page for abbreviations, explanations and disclaimer.

Isin	Ccy	Cpn	Issuer	Maturity	Amnt Out.	Ask	Yield	D/Swap	Durat.	Pieces ESG	Rating	Cty / Sector	Miscellaneous
US718172AC39	USD	6.375	PHILIP MORRIS INTL INC	16.05.2038	1.5 B	107.03	5.72	147	9.09	2k+1k	A-	US / Tobacco	W/Tax, Global
IL0028103310	USD	6.375	ICL GROUP LIMITED	31.05.2038	693.1 MM	90.88	7.57	332	8.63	1+1	BBB-	IL / Chemical	C 2037@100, MWC (50bp), Global
US20030NCL38	USD	4.600	COMCAST CORP	15.10.2038	968.9 MM	90.34	5.66	141	10.15	2k+1k	● A-	US / Comm.	W/Tax, C 2038@100, MWC (25bp), Glob
US205887CD22	USD	5.300	CONAGRA BRANDS INC	01.11.2038	1 B	92.92	6.13	188	9.78	2k+1k	● BBB-	US / Food	W/Tax, C 2038@100, MWC (30bp), Glob
US459200KB68	USD	4.150	IBM CORP *	15.05.2039	2 B	84.91	5.73	149	10.39	100k+1k	● A-	US / Technology	W/Tax, MWC (20bp), Global
US68389XAH89	USD	6.125	ORACLE CORP	08.07.2039	1.25 B	101.91	6.02	177	9.64	2k+1k	● BBB	US / Technology	W/Tax, MWC (30bp), Global
US828807CE50	USD	6.750	SIMON PROPERTY GROUP LP **	01.02.2040	600 MM	108.97	5.95 c	170	9.61	2k+1k	A-	US / Real Estate	W/Tax, C 2039@100, MWC (35bp), Glob
US459200GS40	USD	5.600	IBM CORP **	30.11.2039	745.1 MM	100.67	5.61	137	10.05	1k+1k	● A-	US / Technology	W/Tax, Dom., MWC (25bp)
US91086QAV05	USD	6.050	UNITED MEXICAN STATES	11.01.2040	2.8 B	96.75	6.48	224	9.70	2k+2k	● BBB	MX / Sovereign	MWC (30bp), Global
XS0468535637	USD	6.400	STATE OF QATAR	20.01.2040	1 B	109.30	5.58	134	9.92	100k+1k	AA	QA / Sovereign	MWC (50bp)
US20030NDH17	USD	3.750	COMCAST CORP	01.04.2040	1.6 B	80.02	5.75	151	11.20	2k+1k	● A-	US / Comm.	W/Tax, C 2039@100, MWC (40bp), Glob
US68389XBW48	USD	3.600	ORACLE CORP	01.04.2040	3 B	76.15	6.03	179	11.19	2k+1k	● BBB	US / Technology	W/Tax, C 2039@100, MWC (40bp), Glob
US459200KK67	USD	2.850	IBM CORP *	15.05.2040	650 MM	70.64	5.74	150	11.66	100k+1k	● A-	US / Technology	W/Tax, C 2039@100, MWC (25bp), Glob
US002824AY67	USD	5.300	ABBOTT LABORATORIES **	27.05.2040	694.3 MM	100.07	5.36	112	10.44	2k+1k	● AA-	US / Healthcare	W/Tax, MWC (20bp), Global
US02079KAE73	USD	1.900	ALPHABET INC **	15.08.2040	1.25 B	64.69	5.19	95	12.94	2k+1k	● AA	US / Comm.	W/Tax, C 2040@100, MWC (12bp), Glob
US04650NAB01	USD	5.350	AT&T INC *	01.09.2040	614.6 MM	94.38	5.98	174	10.47	1k+1k	● BBB	US / Telecom	W/Tax, MWC (25bp), Global
US50249AAH68	USD	3.375	LYB INT FINANCE III	01.10.2040	750 MM	73.09	6.06	182	11.53	2k+1k	BBB	US / Chemical	W/Tax, C 2040@100, MWC (30bp), Glob
US437076AV48	USD	5.950	HOME DEPOT INC	01.04.2041	1 B	104.84	5.57 c	134	10.46	2k+1k	● A	US / Retail	W/Tax, Dom., C 2040@100, MWC (25bp), Glob
US89417EAH27	USD	5.350	TRAVELERS COS INC	01.11.2040	750 MM	97.96	5.62	138	10.76	2k+1k	● A	US / Insurance	W/Tax, Dom., MWC (20bp)
USG8185TAB55	USD	6.300	SINOCHEM OVERSEAS CAPITA	12.11.2040	500 MM	105.14	5.90	166	10.03	100k+1k	● A-	CN / Real Estate	MWC (50bp)
US31620MBU99	USD	3.100	FIDELITY NATL INFO SERV	01.03.2041	750 MM	70.70	5.95	172	11.93	2k+1k	BBB	US / Technology	W/Tax, C 2040@100, MWC (17bp), Glob
US445545AF36	USD	7.625	HUNGARY	29.03.2041	1.65 B	111.60	6.59	236	9.75	2k+2k	● BBB-	HU / Sovereign	Global
US29273RAR03	USD	6.500	ENERGY TRANSFER LP	01.02.2042	1 B	102.68	6.34 c	211	10.19	2k+1k	BBB-	US / Energy	W/Tax, C 2041@100, MWC (50bp), Glob
US00206RBA95	USD	5.550	AT&T INC *	15.08.2041	541.2 MM	96.78	5.93	170	10.74	2k+1k	● BBB	US / Telecom	W/Tax, MWC (30bp), Global
US931142EU39	USD	2.500	WALMART INC	22.09.2041	1 B	68.84	5.33	110	12.95	2k+1k	AA	US / Retail	W/Tax, C 2041@100, MWC (10bp), Glob

Yields are annualized.

See last page for abbreviations, explanations and disclaimer.

Isin	Ccy	Cpn	Issuer	Maturity	Amnt Out.	Ask	Yield	D/Swap	Durat.	Pieces ESG	Rating	Cty / Sector	Miscellaneous
US458140AK64	USD	4.800	INTEL CORP **	01.10.2041	801.6 MM	89.69	5.83	160	11.22	2k+1k	● A-	US / Technology	W/Tax, MWC (25bp), Global
US595112BT91	USD	3.366	MICRON TECHNOLOGY INC	01.11.2041	500 MM	72.03	6.05	183	12.07	2k+1k	● BBB-	US / Technology	W/Tax, C 2041@100, MWC (25bp), Glob
US06051GEN51	USD	5.875	BANK OF AMERICA CORP *	07.02.2042	1.5 B	103.94	5.60	137	10.88	2k+1k	● A-	US / Banks	W/Tax, Global
US60871RAD26	USD	5.000	MOLSON COORS BEVERAGE	01.05.2042	1.1 B	90.72	5.93	170	11.37	2k+1k	● BBB	US / Food	W/Tax, MWC (30bp), Global
US084664BU46	USD	4.400	BERKSHIRE HATHAWAY FIN *	15.05.2042	725 MM	90.94	5.25	102	11.71	2k+1k	● AA	US / Insurance	W/Tax, MWC (25bp), Global
US30161MAN39	USD	5.600	CONSTELLATION EN GEN LLC	15.06.2042	786.8 MM	95.66	6.09	186	10.80	2k+1k	● BBB+	US / Utilities	W/Tax, C 2041@100, MWC (45bp), Glob
US459200HF10	USD	4.000	IBM CORP *	20.06.2042	1.1 B	80.84	5.79	157	11.80	1k+1k	● A-	US / Technology	W/Tax, Dom., MWC (20bp)
US718172AU37	USD	3.875	PHILIP MORRIS INTL INC	21.08.2042	750 MM	77.79	5.96	174	11.95	2k+1k	● A-	US / Tobacco	W/Tax, Global
US00206RBH49	USD	4.300	AT&T INC *	15.12.2042	1.3 B	82.56	5.94	172	11.70	1k+1k	● BBB	US / Telecom	W/Tax, C 2042@100, MWC (25bp), Glob
US458140AP51	USD	4.250	INTEL CORP *	15.12.2042	567.1 MM	82.62	5.87	165	11.77	2k+1k	● A-	US / Technology	W/Tax, MWC (25bp), Global
US718172AW92	USD	4.125	PHILIP MORRIS INTL INC	04.03.2043	850 MM	80.29	5.95	174	12.02	2k+1k	● A-	US / Tobacco	W/Tax, Global
US437076BA91	USD	4.200	HOME DEPOT INC	01.04.2043	1 B	84.31	5.63	141	12.22	2k+1k	● A	US / Retail	W/Tax, C 2042@100, MWC (20bp), Glob
US037833AL42	USD	3.850	APPLE INC **	04.05.2043	3 B	83.09	5.34	112	12.66	2k+1k	● AA+	US / Technology	W/Tax, MWC (15bp), Global
US055451AV01	USD	5.000	BHP BILLITON FIN USA LTD *	30.09.2043	2.5 B	94.39	5.55	134	11.97	2k+1k	● A-	AU / Basic Mat.	MWC (20bp), Global
US37045VAF76	USD	6.250	GENERAL MOTORS CO *	02.10.2043	1.5 B	98.61	6.48	227	11.00	2k+1k	● BBB	US / Auto	W/Tax, MWC (50bp), Global
US77586TAE64	USD	6.125	ROMANIA	22.01.2044	1 B	94.25	6.76	255	10.84	2k+2k	● BBB-	RO / Sovereign	
US449276AF17	USD	5.250	IBM INTERNAT CAPITAL *	05.02.2044	1 B	93.74	5.87	166	11.72	100k+1k	● A-	US / Technology	W/Tax, C 2043@100, MWC (15bp), Glob
US91086QBB32	USD	4.750	UNITED MEXICAN STATES	08.03.2044	3.7 B	80.50	6.62	241	11.68	2k+2k	● BBB	MX / Sovereign	MWC (25bp), Global
US037833AT77	USD	4.450	APPLE INC *	06.05.2044	1 B	91.29	5.22	101	12.74	2k+1k	● AA+	US / Technology	W/Tax, MWC (15bp), Global
US718172BL29	USD	4.250	PHILIP MORRIS INTL INC	10.11.2044	1.25 B	80.81	5.96	176	12.28	2k+1k	● A-	US / Tobacco	W/Tax, Global
US91086QBE70	USD	5.550	UNITED MEXICAN STATES	21.01.2045	2.8 B	89.75	6.56	237	11.45	2k+1k	● BBB	MX / Sovereign	MWC (25bp), Global
US31428XBB10	USD	4.100	FEDEX CORP *	01.02.2045	650 MM	77.72	6.08	189	12.52	2k+1k	● BBB	US / Transport	W/Tax, Dom., MWC (25bp)
US539830BD07	USD	3.800	LOCKHEED MARTIN CORP *	01.03.2045	1 B	79.37	5.55	136	13.17	2k+1k	● A-	US / Industrial	W/Tax, C 2044@100, MWC (20bp), Glob
US84756NAG43	USD	4.500	SPECTRA ENERGY PARTNERS *	15.03.2045	700 MM	80.83	6.24	205	12.34	2k+1k	● BBB	US / Energy	W/Tax, C 2044@100, MWC (25bp), Glob
US037833BH21	USD	4.375	APPLE INC **	13.05.2045	2 B	88.24	5.38	120	12.75	2k+1k	● AA+	US / Technology	W/Tax, MWC (25bp), Global

Yields are annualized.

See last page for abbreviations, explanations and disclaimer.

Isin	Ccy	Cpn	Issuer	Maturity	Amnt Out.	Ask	Yield	D/Swap	Durat.	Pieces ESG	Rating	Cty / Sector	Miscellaneous
US68389XBF15	USD	4.125	ORACLE CORP	15.05.2045	2 B	77.57	6.11	193	12.47	2k+1k	● BBB	US / Technology	W/Tax, C 2044@100, MWC (25bp), Glob
US913017CA50	USD	4.150	RTX CORP	15.05.2045	850 MM	80.06	5.89	170	12.57	2k+1k	● BBB+	US / Industrial	W/Tax, C 2044@100, MWC (25bp), Glob
US00206RBK77	USD	4.350	AT&T INC *	15.06.2045	1.1 B	82.13	5.92	173	12.52	1k+1k	● BBB	US / Telecom	W/Tax, C 2044@100, MWC (25bp), Glob
US96949LAC90	USD	5.100	WILLIAMS COMPANIES INC	15.09.2045	1 B	89.34	6.08	190	12.24	2k+1k	● BBB	US / Energy	W/Tax, C 2045@100, MWC (40bp), Glob
US09062XAD57	USD	5.200	BIOGEN INC **	15.09.2045	1.1 B	91.21	6.02	184	12.21	2k+1k	● BBB	US / Healthcare	W/Tax, C 2045@100, MWC (35bp), Glob
US478160BV55	USD	3.700	JOHNSON & JOHNSON *	01.03.2046	2 B	79.79	5.34	117	13.72	2k+1k	● AAA	US / Healthcare	W/Tax, C 2045@100, MWC (20bp), Glob
US437076BH45	USD	4.250	HOME DEPOT INC	01.04.2046	1.6 B	83.34	5.65	149	13.20	2k+1k	● A	US / Retail	W/Tax, C 2045@100, MWC (25bp), Glob
US548661DN40	USD	3.700	LOWE'S COS INC	15.04.2046	1.35 B	73.37	5.96	179	13.46	2k+1k	● BBB+	US / Retail	W/Tax, C 2045@100, MWC (20bp), Glob
US539830BL23	USD	4.700	LOCKHEED MARTIN CORP *	15.05.2046	1.3 B	89.99	5.56	140	12.74	2k+1k	● A-	US / Industrial	W/Tax, C 2045@100, MWC (30bp), Glob
US458140AV20	USD	4.100	INTEL CORP *	19.05.2046	1.25 B	79.38	5.85	168	12.95	2k+1k	● A-	US / Technology	W/Tax, C 2045@100, MWC (25bp), Glob
US594918BT09	USD	3.700	MICROSOFT CORP *	08.08.2046	1.7 B	80.85	5.22	106	13.92	2k+1k	● AAA	US / Technology	W/Tax, C 2046@100, MWC (25bp), Glob
US61746BEG77	USD	4.375	MORGAN STANLEY *	22.01.2047	2.25 B	84.48	5.67	152	13.18	1k+1k	● A-	US / Banks	W/Tax, Dom., MWC (25bp)
US594918CA09	USD	4.250	MICROSOFT CORP **	06.02.2047	1.1 B	90.65	5.00	85	13.76	2k+1k	● AAA	US / Technology	W/Tax, C 2046@100, MWC (20bp), Glob
US037833CH12	USD	4.250	APPLE INC *	09.02.2047	1 B	87.60	5.25	110	13.60	2k+1k	● AA+	US / Technology	W/Tax, C 2046@100, MWC (20bp), Glob
US375558BK80	USD	4.150	GILEAD SCIENCES INC *	01.03.2047	1.75 B	80.19	5.80	165	13.39	2k+1k	● BBB+	US / Healthcare	W/Tax, C 2046@100, MWC (25bp), Glob
US478160CG79	USD	3.750	JOHNSON & JOHNSON *	03.03.2047	1 B	79.95	5.34	119	14.00	2k+1k	● AAA	US / Healthcare	W/Tax, C 2046@100, MWC (15bp), Glob
US10922NAF06	USD	4.700	BRIGHTHOUSE FINANCIAL IN	22.06.2047	1.0 B	76.93	6.78	264	12.28	2k+1k	● BBB-	US / Insurance	W/Tax, C 2046@100, MWC (30bp), Glob
US2027A1JN82	USD	3.900	COMMONWEALTH BANK AUST *	12.07.2047	1.5 B	79.49	5.55	141	13.78	2k+1k	● AA-	AU / Banks	
US05526DBF15	USD	4.540	BAT CAPITAL CORP *	15.08.2047	2.1 B	76.59	6.61	247	12.64	2k+1k	● BBB	GB / Tobacco	W/Tax, C 2047@100, MWC (30bp), Glob
US25470DAT63	USD	5.200	DISCOVERY COMMUNICATIONS	20.09.2047	1.25 B	79.91	7.07	293	11.98	2k+1k	● BBB-	US / Comm.	W/Tax, C 2047@100, MWC (40bp), Glob
US68389XBQ79	USD	4.000	ORACLE CORP	15.11.2047	2.25 B	74.60	6.13	199	13.23	2k+1k	● BBB	US / Technology	W/Tax, C 2047@100, MWC (20bp), Glob
US341081FP71	USD	3.700	FLORIDA POWER & LIGHT CO	01.12.2047	700 MM	75.29	5.68	155	13.87	2k+1k	● A+	US / Utilities	W/Tax, MBS, C 2047@100, MWC (15bp)
US31428XBQ88	USD	4.050	FEDEX CORP *	15.02.2048	1 B	75.90	6.05	192	13.51	2k+1k	● BBB	US / Transport	W/Tax, Dom., C 2047@100, MWC (20bp)
US20030NCK54	USD	4.000	COMCAST CORP	01.03.2048	1 B	77.72	5.81	168	13.78	2k+1k	● A-	US / Comm.	W/Tax, C 2047@100, MWC (20bp), Glob
US036752AH62	USD	4.550	ELEVANCE HEALTH INC	01.03.2048	850 MM	84.08	5.87	174	13.34	1k+1k	● BBB	US / Healthcare	W/Tax, C 2047@100, MWC (25bp), Glob

Yields are annualized.

See last page for abbreviations, explanations and disclaimer.

Isin	Ccy	Cpn	Issuer	Maturity	Amnt Out.	Ask	Yield	D/Swap	Durat.	Pieces ESG	Rating	Cty / Sector	Miscellaneous
US00206RDJ86	USD	4.500	AT&T INC *	09.03.2048	1.7 B	81.64	6.04	191	13.22	2k+1k	● BBB	US / Telecom	W/Tax, C 2047@100, MWC (35bp), Glob
US031162CD02	USD	4.563	AMGEN INC	15.06.2048	1.4 B	84.50	5.84	172	13.23	2k+1k	● BBB+	US / Healthcare	W/Tax, C 2047@100, MWC (30bp), Glob
XS1837994794	USD	5.125	ROMANIA	15.06.2048	1.2 B	81.75	6.77	264	12.24	2k+2k	● BBB-	RO / Sovereign	
US084664CQ25	USD	4.200	BERKSHIRE HATHAWAY FIN *	15.08.2048	2.35 B	84.49	5.42	130	13.98	2k+1k	AA	US / Insurance	W/Tax, C 2048@100, MWC (20bp), Glob
US855244AS84	USD	4.500	STARBUCKS CORP	15.11.2048	1 B	83.79	5.82	171	13.35	2k+1k	● BBB+	US / Retail	W/Tax, C 2048@100, MWC (25bp), Glob
US084664CR08	USD	4.250	BERKSHIRE HATHAWAY FIN *	15.01.2049	2 B	85.49	5.38	127	14.06	2k+1k	AA	US / Insurance	W/Tax, C 2048@100, MWC (25bp), Glob
US084659AR23	USD	4.450	BERKSHIRE HATHAWAY ENERG	15.01.2049	999.9 MM	81.02	6.01	190	13.42	2k+1k	A-	US / Utilities	W/Tax, C 2048@100, MWC (25bp), Glob
US341081FU66	USD	3.990	FLORIDA POWER & LIGHT CO	01.03.2049	600 MM	78.51	5.68	157	14.15	2k+1k	● A+	US / Utilities	W/Tax, MBS, C 2048@100, MWC (15bp)
US911312BQ83	USD	4.250	UNITED PARCEL SERVICE	15.03.2049	750 MM	82.82	5.61	150	14.03	2k+1k	● A	US / Transport	W/Tax, Dom., C 2048@100, MWC (20bp)
US37045VAT70	USD	5.950	GENERAL MOTORS CO *	01.04.2049	900 MM	95.49	6.41	230	12.50	2k+1k	BBB	US / Auto	W/Tax, C 2048@100, MWC (45bp), Glob
US459200KC42	USD	4.250	IBM CORP *	15.05.2049	3 B	80.30	5.83	172	13.65	100k+1k	● A-	US / Technology	W/Tax, MWC (25bp), Global
US521865AZ81	USD	5.250	LEAR CORP	15.05.2049	625 MM	88.56	6.25	214	12.69	2k+1k	BBB	US / Auto	W/Tax, C 2048@100, MWC (40bp), Glob
US404119BZ18	USD	5.250	HCA INC	15.06.2049	2 B	88.21	6.28	217	12.74	2k+1k	BBB-	US / Healthcare	W/Tax, Dom., C 2048@100, MWC (45bp)
US037833DQ02	USD	2.950	APPLE INC *	11.09.2049	1.5 B	67.06	5.41	131	15.58	2k+1k	● AA+	US / Technology	W/Tax, C 2049@100, MWC (20bp), Glob
US970648AK73	USD	3.875	WILLIS NORTH AMERICA INC	15.09.2049	550 MM	72.79	6.06	196	13.98	2k+1k	BBB-	US / Insurance	W/Tax, C 2049@100, MWC (30bp), Glob
US341081FX06	USD	3.150	FLORIDA POWER & LIGHT CO	01.10.2049	800 MM	67.40	5.64	154	15.17	2k+1k	● A+	US / Utilities	W/Tax, MBS, C 2049@100, MWC (15bp)
US03027XAY67	USD	3.700	AMERICAN TOWER CORP *	15.10.2049	600 MM	70.81	6.03	193	14.34	2k+1k	● BBB-	US / Real Estate	W/Tax, C 2049@100, MWC (25bp), Glob
US20030NCE94	USD	3.999	COMCAST CORP	01.11.2049	2.0 B	76.89	5.82	172	14.32	2k+1k	● A-	US / Comm.	W/Tax, C 2049@100, MWC (20bp), Glob
US20030NCZ24	USD	3.450	COMCAST CORP	01.02.2050	1.8 B	70.35	5.73	164	14.66	2k+1k	● A-	US / Comm.	W/Tax, C 2049@100, MWC (20bp), Glob
US907818FK90	USD	3.250	UNION PACIFIC CORP	05.02.2050	1.75 B	69.19	5.58	149	15.11	1k+1k	● A-	US / Transport	W/Tax, C 2049@100, MWC (20bp), Glob
US10373QBG47	USD	3.000	BP CAP MARKETS AMERICA *	24.02.2050	2 B	65.20	5.63	154	15.38	1k+1k	A-	US / Energy	W/Tax, C 2049@100, MWC (20bp), Glob
US09062XAG88	USD	3.150	BIOGEN INC **	01.05.2050	1.5 B	63.93	5.96	187	15.11	2k+1k	● BBB	US / Healthcare	W/Tax, C 2049@100, MWC (30bp), Glob
US097023CW33	USD	5.805	BOEING CO	01.05.2050	5.5 B	89.93	6.73	265	12.57	2k+1k	BBB-	US / Industrial	W/Tax, Step Rtg, C 2049@100, MWC (50bp)
US459200KL41	USD	2.950	IBM CORP *	15.05.2050	750 MM	62.93	5.78	170	15.19	100k+1k	● A-	US / Technology	W/Tax, C 2049@100, MWC (25bp), Glob
US594918CC64	USD	2.525	MICROSOFT CORP *	01.06.2050	6.2 B	61.99	5.27	119	16.29	2k+1k	● AAA	US / Technology	W/Tax, C 2049@100, MWC (20bp), Glob

Yields are annualized.

See last page for abbreviations, explanations and disclaimer.

Isin	Ccy	Cpn	Issuer	Maturity	Amnt Out.	Ask	Yield	D/Swap	Durat.	Pieces ESG	Rating	Cty / Sector	Miscellaneous
US023135BT22	USD	2.500	AMAZON.COM INC *	03.06.2050	2.5 B	60.29	5.41	133	16.19	2k+1k	A+	US / Comm.	W/Tax, C 2049@100, MWC (20bp), Glob
US03027XBD12	USD	3.100	AMERICAN TOWER CORP *	15.06.2050	1.05 B	63.51	5.93	184	14.90	2k+1k	● BBB-	US / Real Estate	W/Tax, C 2049@100, MWC (30bp), Glob
US45866FAL85	USD	3.000	INTERCONTINENTALEXCHANGE	15.06.2050	1.25 B	65.31	5.60	152	15.27	2k+1k	● A-	US / Financial	W/Tax, C 2049@100, MWC (25bp), Glob
US75513EAC57	USD	3.125	RTX CORP	01.07.2050	1 B	65.60	5.74	166	15.07	2k+1k	BBB+	US / Industrial	W/Tax, C 2050@100, MWC (30bp), Glob
US828807DJ39	USD	3.800	SIMON PROPERTY GROUP LP *	15.07.2050	750 MM	72.99	5.91	183	14.33	2k+1k	A-	US / Real Estate	W/Tax, C 2050@100, MWC (40bp), Glob
US29444UBJ43	USD	3.000	EQUINIX INC	15.07.2050	500 MM	63.02	5.83	175	15.09	2k+1k	● BBB	US / Real Estate	W/Tax, C 2050@100, MWC (25bp), Glob
US694308JJ74	USD	3.500	PACIFIC GAS & ELECTRIC	01.08.2050	1.925 B	65.44	6.27	219	14.27	2k+1k	BBB	US / Utilities	W/Tax, MBS, C 2050@100, MWC (30bp)
US02079KAF49	USD	2.050	ALPHABET INC **	15.08.2050	2.5 B	56.70	5.10	103	17.41	2k+1k	● AA	US / Comm.	W/Tax, C 2050@100, MWC (15bp), Glob
US92826CAQ50	USD	2.000	VISA INC *	15.08.2050	1.75 B	55.14	5.19	111	17.47	2k+1k	● AA-	US / Financial	W/Tax, C 2050@100, MWC (15bp), Glob
US037833DZ01	USD	2.400	APPLE INC *	20.08.2050	1.25 B	59.44	5.34	126	16.63	2k+1k	● AA+	US / Technology	W/Tax, C 2050@100, MWC (15bp), Glob
US715638BM30	USD	5.625	REPUBLIC OF PERU	18.11.2050	2.545 B	94.39	6.14	207	12.92	1k+1k	● BBB-	PE / Sovereign	Global
US22822VAU52	USD	3.250	CROWN CASTLE INC	15.01.2051	900 MM	65.45	5.90	183	14.97	2k+1k	BBB-	US / Real Estate	W/Tax, C 2050@100, MWC (25bp), Glob
US20030NDL29	USD	2.800	COMCAST CORP	15.01.2051	1.7 B	60.71	5.76	168	15.69	2k+1k	● A-	US / Comm.	W/Tax, C 2050@100, MWC (25bp), Glob
US084664CX75	USD	2.500	BERKSHIRE HATHAWAY FIN *	15.01.2051	750 MM	60.20	5.38	130	16.48	2k+1k	AA	US / Insurance	W/Tax, C 2050@100, MWC (15bp), Glob
US037833EF38	USD	2.650	APPLE INC *	08.02.2051	3 B	62.24	5.38	131	16.31	2k+1k	● AA+	US / Technology	W/Tax, C 2050@100, MWC (15bp), Glob
XS2201851685	USD	4.000	ROMANIA	14.02.2051	2 B	67.50	6.71	264	13.58	2k+2k	● BBB-	RO / Sovereign	
US036752AS28	USD	3.600	ELEVANCE HEALTH INC	15.03.2051	1.25 B	71.26	5.79	172	14.93	1k+1k	● BBB	US / Healthcare	W/Tax, C 2050@100, MWC (20bp), Glob
US437076CG52	USD	2.375	HOME DEPOT INC	15.03.2051	1.25 B	56.85	5.53	146	16.67	2k+1k	● A	US / Retail	W/Tax, C 2050@100, MWC (15bp), Glob
US906548CS94	USD	2.625	UNION ELECTRIC CO	15.03.2051	550 MM	59.39	5.63	156	16.12	2k+1k	A	US / Utilities	W/Tax, MBS, C 2050@100, MWC (20bp)
US25278XAQ25	USD	4.400	DIAMONDBACK ENERGY INC	24.03.2051	650 MM	79.73	6.00	193	14.08	2k+1k	BBB- (wl+)	US / Energy	W/Tax, C 2050@100, MWC (30bp), Glob
US30231GBM33	USD	3.452	EXXON MOBIL CORPORATION *	15.04.2051	2.75 B	71.69	5.55	148	15.36	2k+1k	AA-	US / Energy	W/Tax, C 2050@100, MWC (35bp), Glob
US023135CB05	USD	3.100	AMAZON.COM INC *	12.05.2051	3.25 B	67.95	5.43	137	15.60	2k+1k	A+	US / Comm.	W/Tax, C 2050@100, MWC (15bp), Glob
US10373QBP46	USD	2.939	BP CAP MARKETS AMERICA *	04.06.2051	2.25 B	63.61	5.63	157	15.62	1k+1k	A-	US / Energy	W/Tax, C 2050@100, MWC (20bp), Glob
US907818EM65	USD	3.799	UNION PACIFIC CORP	01.10.2051	1.0 B	75.82	5.60	154	14.99	1k+1k	● A-	US / Transport	W/Tax, C 2051@100, MWC (25bp), Glob
US75513ECP43	USD	3.030	RTX CORP	15.03.2052	1.1 B	63.46	5.73	168	15.73	2k+1k	BBB+	US / Industrial	W/Tax, C 2051@100, MWC (20bp), Glob

Yields are annualized.

See last page for abbreviations, explanations and disclaimer.

Isin	Ccy	Cpn	Issuer	Maturity	Amnt Out.	Ask	Yield	D/Swap	Durat.	Pieces ESG	Rating	Cty / Sector	Miscellaneous
US437076CQ35	USD	3.625	HOME DEPOT INC	15.04.2052	1.5 B	73.07	5.60	156	15.38	2k+1k	● A	US / Retail	W/Tax, C 2051@100, MWC (20bp), Glob
US70450YAM57	USD	5.050	PAYPAL HOLDINGS INC **	01.06.2052	1 B	92.47	5.66	162	13.94	2k+1k	● A-	US / Services	W/Tax, C 2051@100, MWC (30bp), Glob
US26441CBU80	USD	5.000	DUKE ENERGY CORP	15.08.2052	1.15 B	86.56	6.08	204	13.73	2k+1k	● BBB	US / Utilities	W/Tax, C 2052@100, MWC (35bp), Glob
US30303M8J41	USD	4.450	META PLATFORMS INC	15.08.2052	2.7 B	84.68	5.60	156	14.59	2k+1k	● AA-	US / Comm.	W/Tax, C 2052@100, MWC (25bp), Glob
US539830BN88	USD	4.090	LOCKHEED MARTIN CORP *	15.09.2052	1.6 B	80.44	5.53	149	14.99	1k+1k	● A-	US / Industrial	W/Tax, C 2052@100, MWC (20bp), Glob
US87264ACT07	USD	3.400	T-MOBILE USA INC	15.10.2052	2.8 B	67.19	5.84	181	15.48	2k+1k	● BBB	US / Telecom	W/Tax, C 2052@100, MWC (25bp), Glob
XS2571924070	USD	7.625	ROMANIA	17.01.2053	1.25 B	107.40	7.14	311	11.81	2k+2k	● BBB-	RO / Sovereign	Global
US054989AD07	USD	7.081	BAT CAPITAL CORP *	02.08.2053	1 B	107.04	6.64 c	261	12.40	2k+1k	● BBB	GB / Tobacco	W/Tax, C 2053@100, MWC (50bp), Glob
US68389XCQ60	USD	5.550	ORACLE CORP	06.02.2053	2.25 B	93.29	6.14	211	13.52	2k+1k	● BBB	US / Technology	W/Tax, C 2052@100, MWC (30bp), Glob
US907818FZ69	USD	3.500	UNION PACIFIC CORP	14.02.2053	1.25 B	71.42	5.56	153	15.57	1k+1k	● A-	US / Transport	W/Tax, C 2052@100, MWC (20bp), Glob
US75513ECS81	USD	5.375	RTX CORP	27.02.2053	1.25 B	94.78	5.83	180	13.92	2k+1k	● BBB+	US / Industrial	W/Tax, C 2052@100, MWC (25bp), Glob
US04316JAE91	USD	5.750	ARTHUR J GALLAGHER & CO	02.03.2053	600 MM	96.17	6.12	209	13.51	2k+1k	● BBB	US / Insurance	W/Tax, C 2052@100, MWC (30bp), Glob
US911312CA23	USD	5.050	UNITED PARCEL SERVICE	03.03.2053	1.1 B	93.45	5.58	155	14.44	2k+1k	● A	US / Transport	W/Tax, C 2052@100, MWC (20bp), Glob
US76720AAP12	USD	5.125	RIO TINTO FIN USA PLC *	09.03.2053	1.1 B	92.90	5.70	168	14.28	2k+1k	● A	AU / Basic Mat.	C 2052@100, MWC (20bp), Global
US882508CC69	USD	5.000	TEXAS INSTRUMENTS INC	14.03.2053	650 MM	92.75	5.58	155	14.50	2k+1k	● A+	US / Technology	W/Tax, C 2052@100, MWC (20bp), Glob
US30036FAB76	USD	5.700	EVERGY KANSAS CENTRAL	15.03.2053	400 MM	97.44	5.97	194	13.72	2k+1k	● A	US / Utilities	W/Tax, MBS, C 2052@100, MWC (30bp)
US26442UAR59	USD	5.350	DUKE ENERGY PROGRESS LLC	15.03.2053	500 MM	93.97	5.87	184	14.00	2k+1k	● A	US / Utilities	W/Tax, MBS, C 2052@100, MWC (25bp)
US341081GM32	USD	5.300	FLORIDA POWER & LIGHT CO	01.04.2053	750 MM	96.03	5.66	163	14.25	2k+1k	● A+	US / Utilities	W/Tax, MBS, C 2052@100, MWC (25bp)
US731011AW25	USD	5.500	REPUBLIC OF POLAND	04.04.2053	2.5 B	95.90	5.88	185	13.96	1k+1k	● A-	PL / Sovereign	C 2052@100, Global
US037833EW60	USD	4.850	APPLE INC *	10.05.2053	1.25 B	93.96	5.33	130	14.63	2k+1k	● AA+	US / Technology	W/Tax, C 2052@100, MWC (20bp), Glob
US907818GF96	USD	4.950	UNION PACIFIC CORP	15.05.2053	500 MM	92.23	5.56	154	14.33	1k+1k	● A-	US / Transport	W/Tax, C 2052@100, MWC (20bp), Glob
US20030NEF42	USD	5.350	COMCAST CORP	15.05.2053	1.6 B	94.42	5.83	181	13.79	2k+1k	● A-	US / Comm.	W/Tax, C 2052@100, MWC (25bp), Glob
US110122EB03	USD	6.250	BRISTOL-MYERS SQUIBB CO	15.11.2053	1.25 B	107.23	5.82 c	179	13.38	2k+1k	● A	US / Healthcare	W/Tax, C 2053@100, MWC (20bp), Glob
US58933YBM66	USD	5.000	MERCK & CO INC **	17.05.2053	1.5 B	93.20	5.54	152	14.28	2k+1k	● A+	US / Healthcare	W/Tax, C 2052@100, MWC (20bp), Glob
US548661ER45	USD	5.750	LOWE'S COS INC	01.07.2053	500 MM	98.64	5.93	191	13.62	2k+1k	● BBB+	US / Retail	W/Tax, C 2053@100, MWC (30bp), Glob

Yields are annualized.

See last page for abbreviations, explanations and disclaimer.

Isin	Ccy	Cpn	Issuer	Maturity	Amnt Out.	Ask	Yield	D/Swap	Durat.	Pieces ESG	Rating	Cty / Sector	Miscellaneous
US58013MFW91	USD	5.450	MCDONALD'S CORP *	14.08.2053	800 MM	97.00	5.74	172	14.05	1k+1k	● BBB+	US / Retail	W/Tax, C 2053@100, MWC (20bp), Glob
US055451BF42	USD	5.500	BHP BILLITON FIN USA LTD *	08.09.2053	800 MM	99.11	5.64	162	14.18	2k+1k	A-	AU / Basic Mat.	C 2053@100, MWC (20bp), Global
US00206RKJ04	USD	3.500	AT&T INC *	15.09.2053	7.5 B	66.82	5.97	196	15.35	2k+1k	● BBB	US / Telecom	W/Tax, C 2053@100, MWC (35bp), Glob
US75513ECX76	USD	6.400	RTX CORP	15.03.2054	1.75 B	108.39	5.89 c	187	13.61	2k+1k	● BBB+	US / Industrial	W/Tax, C 2053@100, MWC (25bp), Glob
US375558CA99	USD	5.550	GILEAD SCIENCES INC *	15.10.2053	1 B	98.71	5.72	170	14.21	2k+1k	● BBB+	US / Healthcare	W/Tax, C 2053@100, MWC (20bp), Glob
US26442CBL72	USD	5.400	DUKE ENERGY CAROLINAS	15.01.2054	925 MM	95.57	5.79	178	14.03	2k+1k	A	US / Utilities	W/Tax, MBS, C 2053@100, MWC (25bp)
US449276AG99	USD	5.300	IBM INTERNAT CAPITAL *	05.02.2054	1.4 B	92.44	5.92	191	14.05	100k+1k	A-	US / Technology	W/Tax, C 2053@100, MWC (15bp), Glob
US882508CJ13	USD	5.150	TEXAS INSTRUMENTS INC	08.02.2054	750 MM	95.16	5.56	155	14.50	2k+1k	● A+	US / Technology	W/Tax, C 2053@100, MWC (15bp), Glob
US125523CW86	USD	5.600	CIGNA GROUP/THE	15.02.2054	1.5 B	95.34	6.02	201	13.82	2k+1k	● BBB+	US / Healthcare	W/Tax, C 2053@100, MWC (20bp), Glob
US458140CM03	USD	5.600	INTEL CORP *	21.02.2054	1.15 B	95.37	6.02	201	13.83	2k+1k	● A-	US / Technology	W/Tax, C 2053@100, MWC (20bp), Glob
US110122EK02	USD	5.550	BRISTOL-MYERS SQUIBB CO	22.02.2054	2.75 B	97.89	5.78	177	14.09	2k+1k	● A	US / Healthcare	W/Tax, C 2053@100, MWC (20bp), Glob
US92343VGVW81	USD	5.500	VERIZON COMMUNICATIONS *	23.02.2054	1 B	96.45	5.83	182	14.09	2k+1k	● BBB+	US / Telecom	W/Tax, C 2053@100, MWC (20bp), Glob
US17275RBU59	USD	5.300	CISCO SYSTEMS INC *	26.02.2054	2 B	97.96	5.51	150	14.50	2k+1k	● A+	US / Telecom	W/Tax, C 2053@100, MWC (15bp), Glob
US438516CT12	USD	5.250	HONEYWELL INTERNATIONAL	01.03.2054	1.75 B	96.27	5.58	157	14.52	2k+1k	A	US / Technology	W/Tax, C 2053@100, MWC (15bp), Glob
US970648AN13	USD	5.900	WILLIS NORTH AMERICA INC	05.03.2054	750 MM	97.14	6.20	219	13.48	2k+1k	● BBB-	US / Insurance	W/Tax, C 2053@100, MWC (25bp), Glob
US65339KCV08	USD	5.550	NEXTERA ENERGY CAPITAL	15.03.2054	800 MM	94.86	6.00	200	13.83	2k+1k	● BBB+	US / Utilities	W/Tax, C 2053@100, MWC (20bp), Glob
US571748BX98	USD	5.450	MARSH & MCLENNAN COS INC	15.03.2054	500 MM	96.89	5.75	174	14.12	2k+1k	● A-	US / Insurance	W/Tax, C 2053@100, MWC (20bp), Glob
US595620AY17	USD	5.850	MIDAMERICAN ENERGY CO	15.09.2054	1 B	101.86	5.80 c	179	13.97	2k+1k	A	US / Utilities	W/Tax, MBS, C 2054@100, MWC (25bp)
US731011AZ55	USD	5.500	REPUBLIC OF POLAND	18.03.2054	3.5 B	94.79	5.96	195	14.04	1k+1k	● A-	PL / Sovereign	C 2053@100, Global
US842434DA71	USD	5.600	SOUTHERN CALIF GAS CO	01.04.2054	500 MM	96.02	5.97	196	13.96	2k+1k	● A+	US / Utilities	W/Tax, MBS, C 2053@100, MWC (20bp)
USG2584CAH90	USD	5.417	CSL FINANCE PLC	03.04.2054	750 MM	94.72	5.87	187	14.19	2k+1k	● A-	AU / Healthcare	C 2053@100, MWC (20bp)

Yields are annualized.

See last page for abbreviations, explanations and disclaimer.

-- Investment Grade USD --

Abbreviations, explanations and disclaimer

Abbreviations

Price Options

a:	Adjusted price
d:	Dirty price
u :	Unit traded

Coupon Frequency

S-A:	Semi-annual
Qtrly:	Quarterly
Mthly:	Monthly

Amount

k:	Thousand
MM:	Million
B:	Billion

Call and Put Features

c:	The yield is calculated on the next call date
p:	The yield is calculated on the next put date
w:	The yield is calculated on a call/put date, but not the next one
Called:	The call option has been exercised

Coupon Types

FRN:	Floating Rate Note - The coupon is reset every quarter
FTF:	Fix-To-Float or Float-To-Fix - A specific case of variable coupon
ILB:	Inflation Linked Bond - The coupon is linked to an inflation indicator
PIK:	Pay in Kind - The coupon is paid with debt or stock instead of cash
VAR:	Variable Coupon - The coupon changes during the life of the bond

Various

**	This bond is part of our bond picking / investment case selection
*	This issuer is part of our bond picking / investment case selection
Cpn:	Currency of coupon - used for dual currencies bonds
Dom.:	Domestic bonds - Bonds issued on a domestic market
Into...:	Convertible into
LT2:	Lower Tier 2 - A specific rank of subordinated debt
LTM or LTW:	Life to Maturity or Life to Workout
MWC:	Make Whole Call - A specific type of call provision
Rdp:	Currency of redemption - used for dual currencies bonds
Rdpt:	Price of redemption - indicated when it is different than 100%
Sub:	Subordinated - In case of default, the debt is reimbursed after the senior debts
UT2:	Upper Tier 2 - A specific rank of subordinated debt

ESG

●	Above average with a strong consensus of positive opinions
●	Above average with a medium to weak consensus of opinions
●	Below average with a medium to weak consensus of opinions
●	Below average with a strong consensus of negative opinions

Taxes and Restrictions

GU:	Gross Up - All bonds are subject to EU tax for European residents (35%), unless written 'GU' (Gross-Up)
W/Tax:	Subject to a Withholding Tax
RegS:	A bond issued for non-US investors only
144A:	A placement designed for US investors only
CoCos:	Contingent convertibles - Please, note that this class of asset is subject to sales restrictions to retail investors in some jurisdictions (UK for instance)

Our own indicators

The **Value Rank** ascertains if the D/Swap of the bond is amongst the cheapest or the most expensive of comparable bonds in terms of both rating and life to workout date.

Every week, we check the liquidity of each bond in our database. Our proprietary **Liquidity Rank** helps identifying bonds that match client's liquidity needs.

Our **Credit Review Model** classifies issuers according to their debt sustainability. Each company's ratio is compared to its sector and to its rating median ratios.

The ESG consensus is an assessment methodology offering easy comparison of any portfolio or fund. It guarantees a consistent approach and avoids any methodological bias. It is based on a multi-scan of several independent complementary and recognized ESG sources. It covers a universe of more than 5'000 companies and over 200 countries. ESG report shows also implication in Sensitive Sectors, Major Controversies and Climate Impact. ESG Data is provided by Conser (www.conser.ch). More details on the methodology can be discussed with your usual sales contact.

Disclaimer

This document has been issued by bridport & cie sa. It has been prepared solely for informational purposes and should not be construed as an offer to buy or sell or a solicitation of an offer to buy or sell any security or instrument or to participate in any transaction or trading activity. The contents are based on sources believed to be reliable, accurate and complete. No representations or guarantees are hereby made as regards the accuracy or completeness of the information contained herein and such information does not replace the advice or recommendations of a qualified professional, which prospective investors (whether individual or institutional) are strongly encouraged to seek. No responsibility whatsoever is hereby accepted for any damage arising out of or in connection with the use of the information contained in this document, whether direct or indirect and whether arising in contract, tort or otherwise. For the avoidance of doubt, this document is neither an offer, a contractual document or any form of recommendation. Any information (including prices, availability and expressions) in this document is purely indicative and is subject to change without notice. This document may not be copied, distributed, reproduced or transmitted for any purpose without bridport & cie sa's prior consent in writing.